



MyBuildingPermit.com

CONSTRUCTION TIP SHEET 16 Bathrooms -- Type B Unit

April 2009

2006 Codes

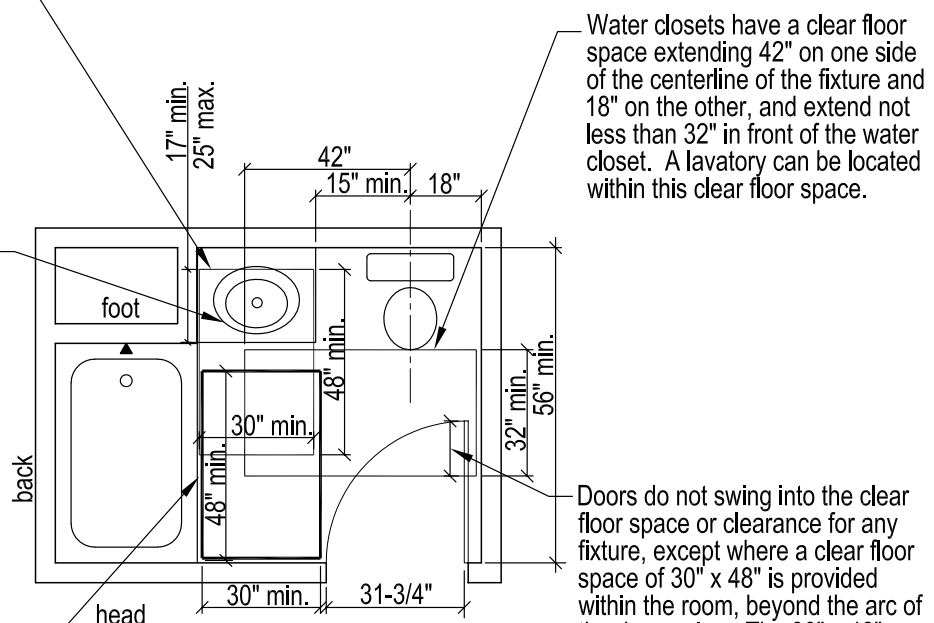
In Groups R-1, R-2, and R-4: When buildings have 4 or more dwelling or sleeping units intended to be occupied as residences, each of these units must be a Type B Unit.

A clear floor space not less than 30" x 48" required in front of lavatory to allow for forward approach (see NOTE below for exceptions). Clear floor space may include knee clearance permitted to extend 11" minimum to 25" maximum, and toe clearance permitted to extend 17" minimum to 25" maximum.

NOTE:

Option A: Install lavatory with removable base cabinet, where removal of base cabinet will provide 30" x 48" clear floor space, centered on the lavatory with parallel approach. Knee and toe clearance per ICC A117.1, 606 provided when cabinet removed.

Option B: Install lavatory with permanent base cabinet where 30" x 48" clear floor space centered on lavatory where parallel approach is provided with cabinet in place.



Parallel approach: 30" x 60" long, 30" x 48" long is okay when a lavatory is installed.

Perpendicular or forward approach: 48" x 60" long. A water closet is permitted at the foot of the tub.

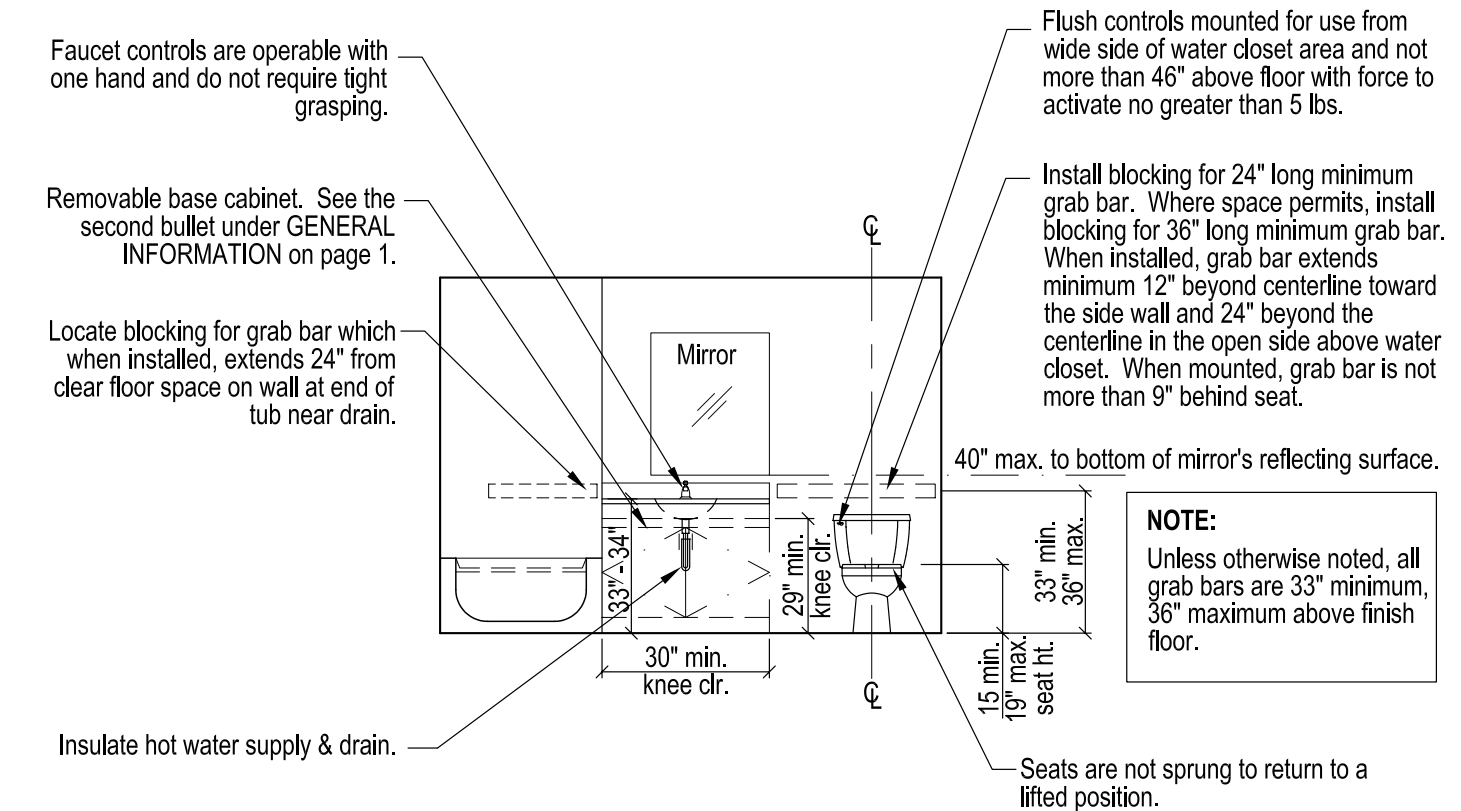
Type B Unit -- Floor Plan 1

GENERAL INFORMATION:

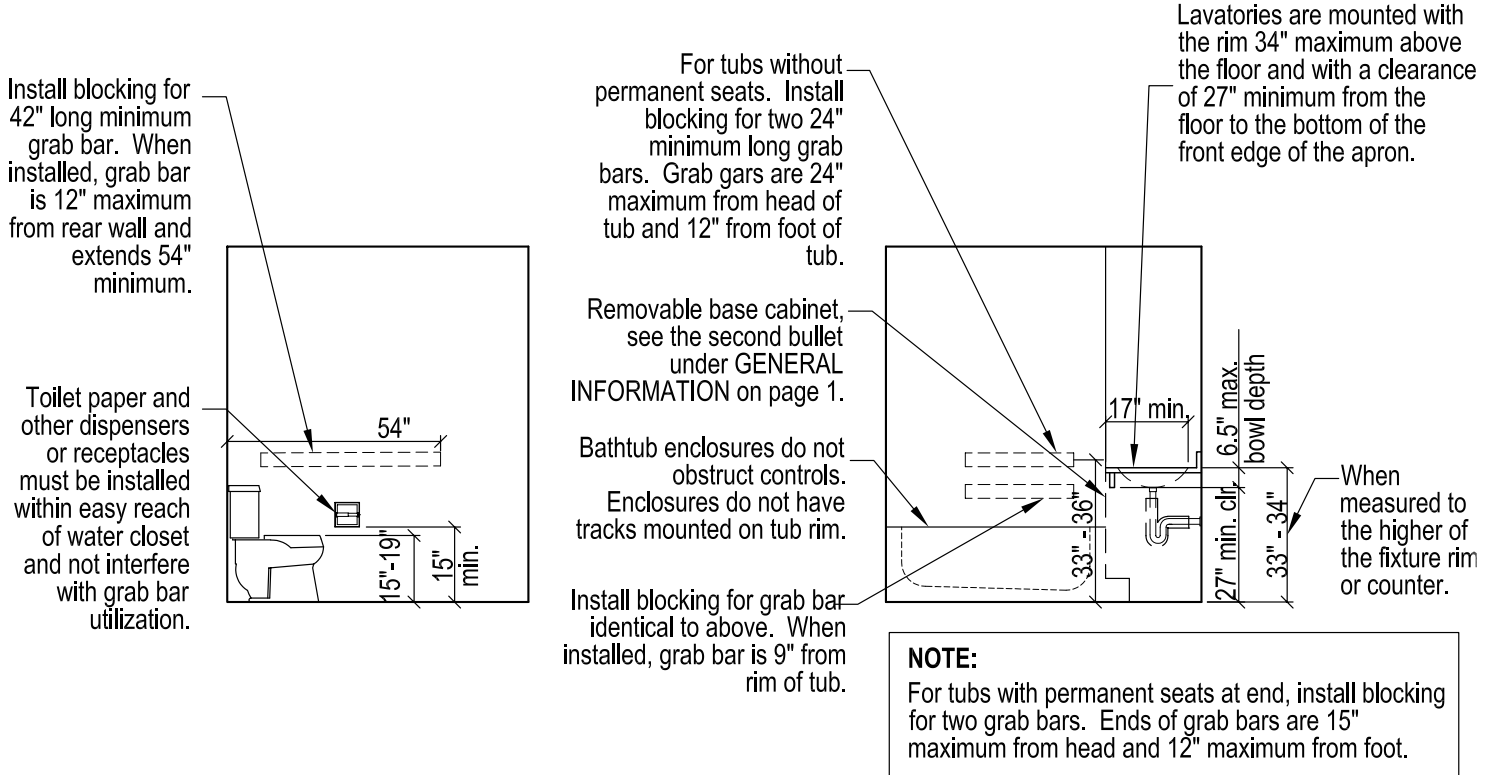
- Only one bathroom per unit has to be accessible.
- Cabinets and shelving can be installed underneath counter space or lavatories provided that it is not permanent, the finish floor extends under the cabinets (ICC A117.1, 1002.12.3.1), and they are easily removable (with the use of nuts, bolts, and screws and/or without using a saw, prybar, or jackhammer).
- All doors on accessible routes have a clear opening of 32" minimum, measured from the face of the door, when open 90% to the door stop. See Tip Sheet 14 Accessibility and Door Clearance.
- Thresholds, if provided, are 1/2" high, maximum.
- Grab bars: 1-1/4" to 2" in diameter, or the shape provides an equivalent gripping surface and is capable of supporting 250 lbs.
- For code requirements refer to:
 - Chapter 11 of the 2003 IBC
 - Appendix Chapter E, Sections E101 - E107
 - ICC / ANSI A117.1 - 1998, as amended in IBC 1101.2

Bathrooms -- Type B Unit

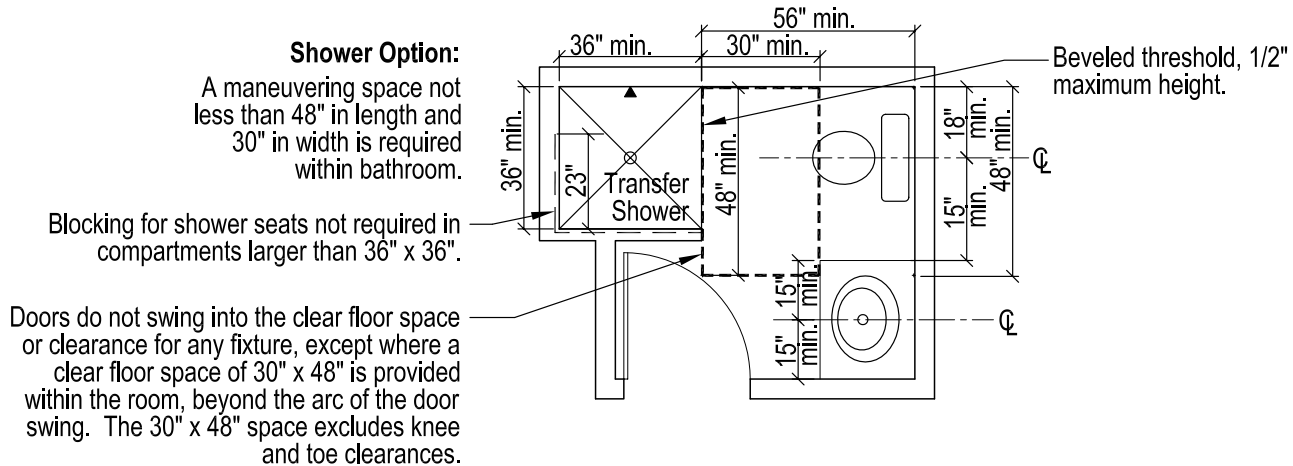
Page 2 of 5



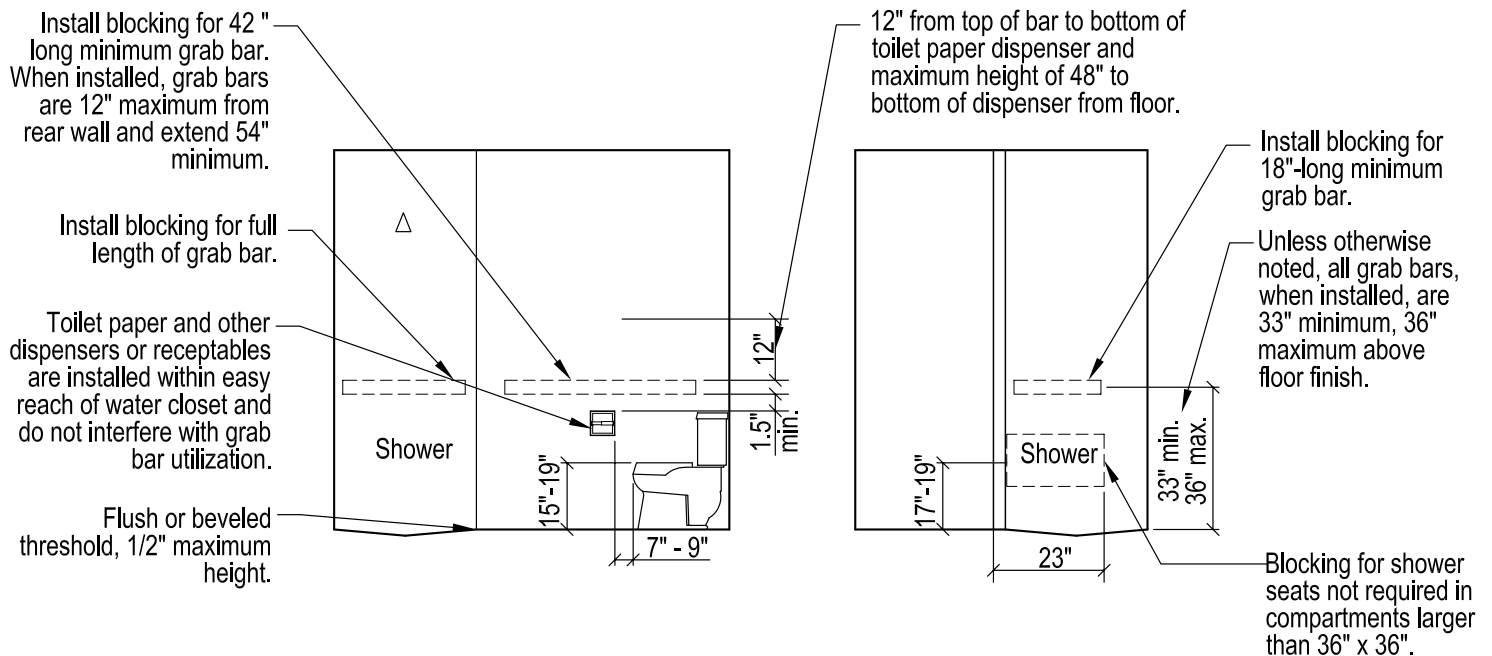
North Wall Interior Elevation for Floor Plan 1



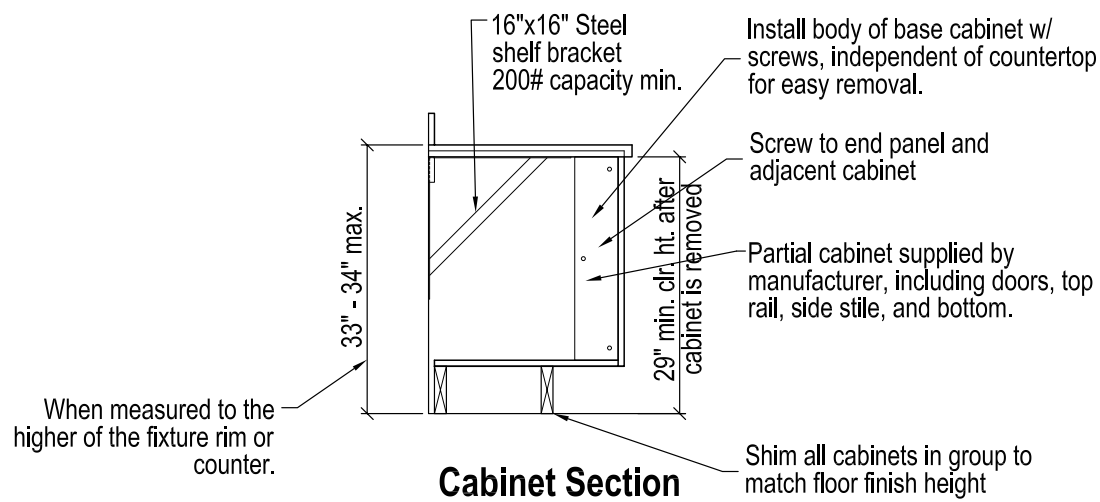
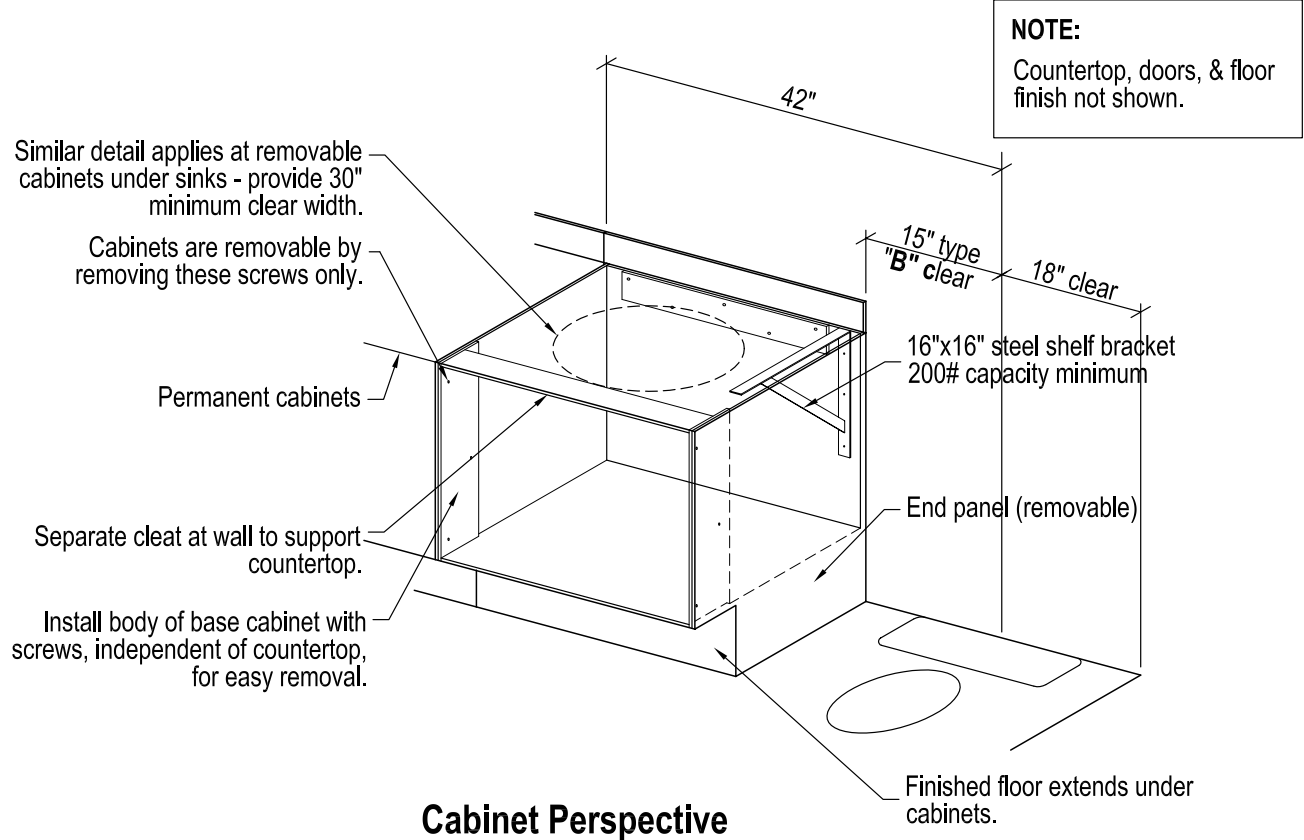
East and West Wall Interior Elevations for Floor Plan 1

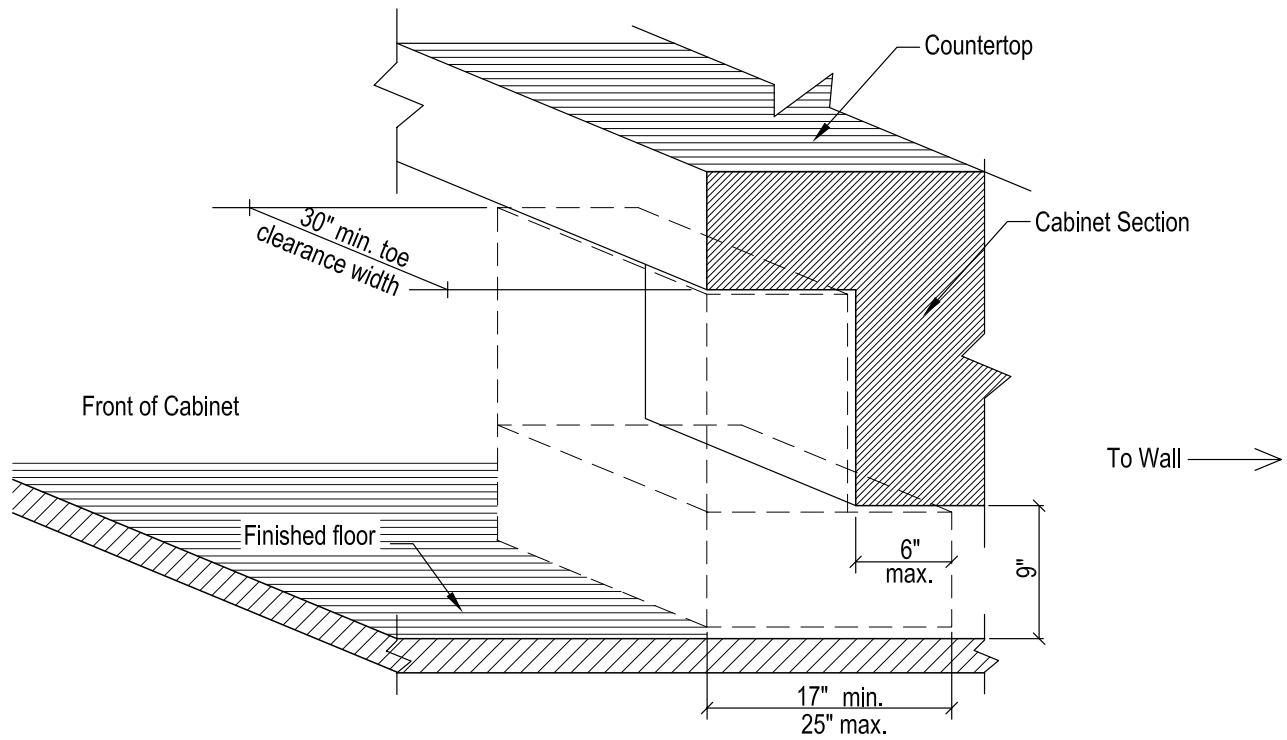


Type B Unit -- Floor Plan 2 with Shower Option

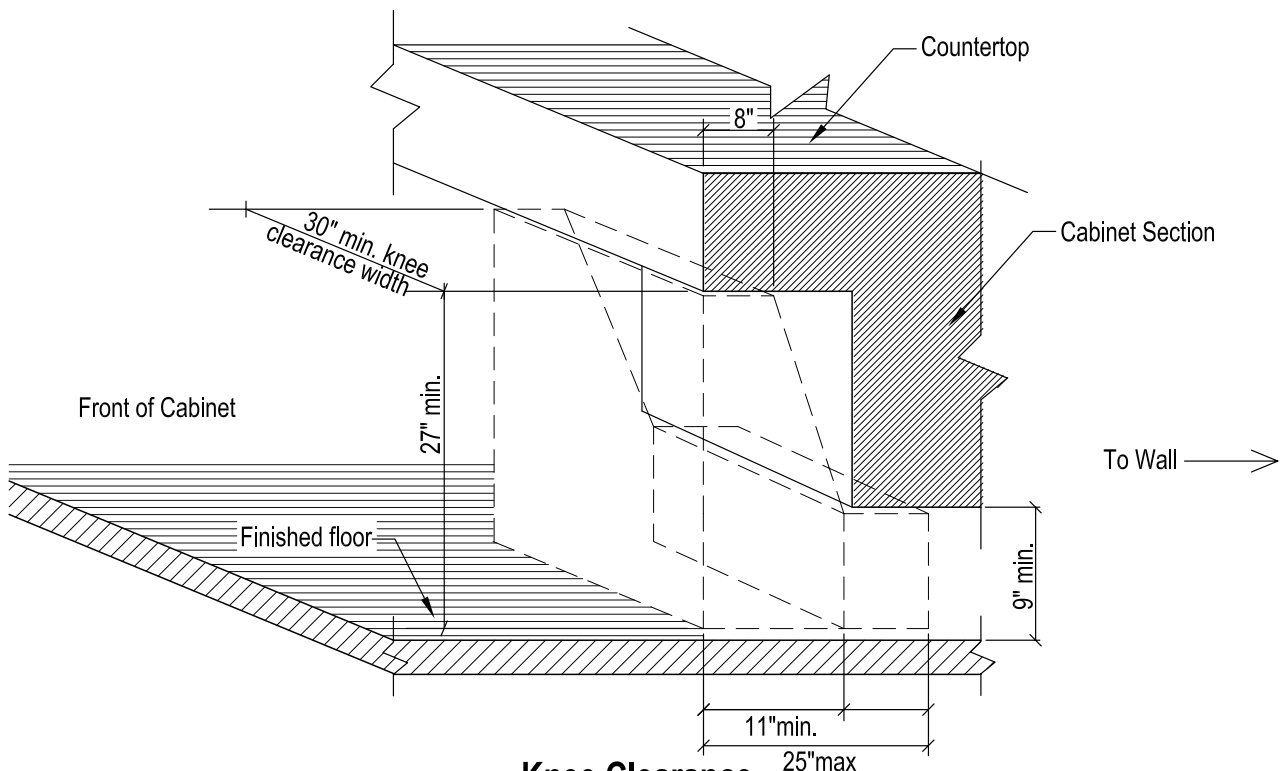


North and West Wall Interior Elevations for Floor Plan 2 with Shower Option





Toe Clearance



Knee Clearance