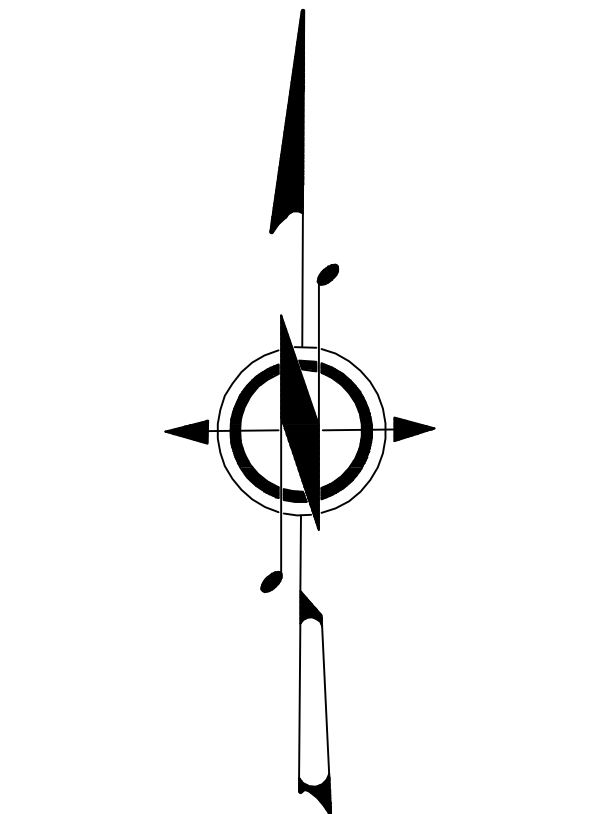
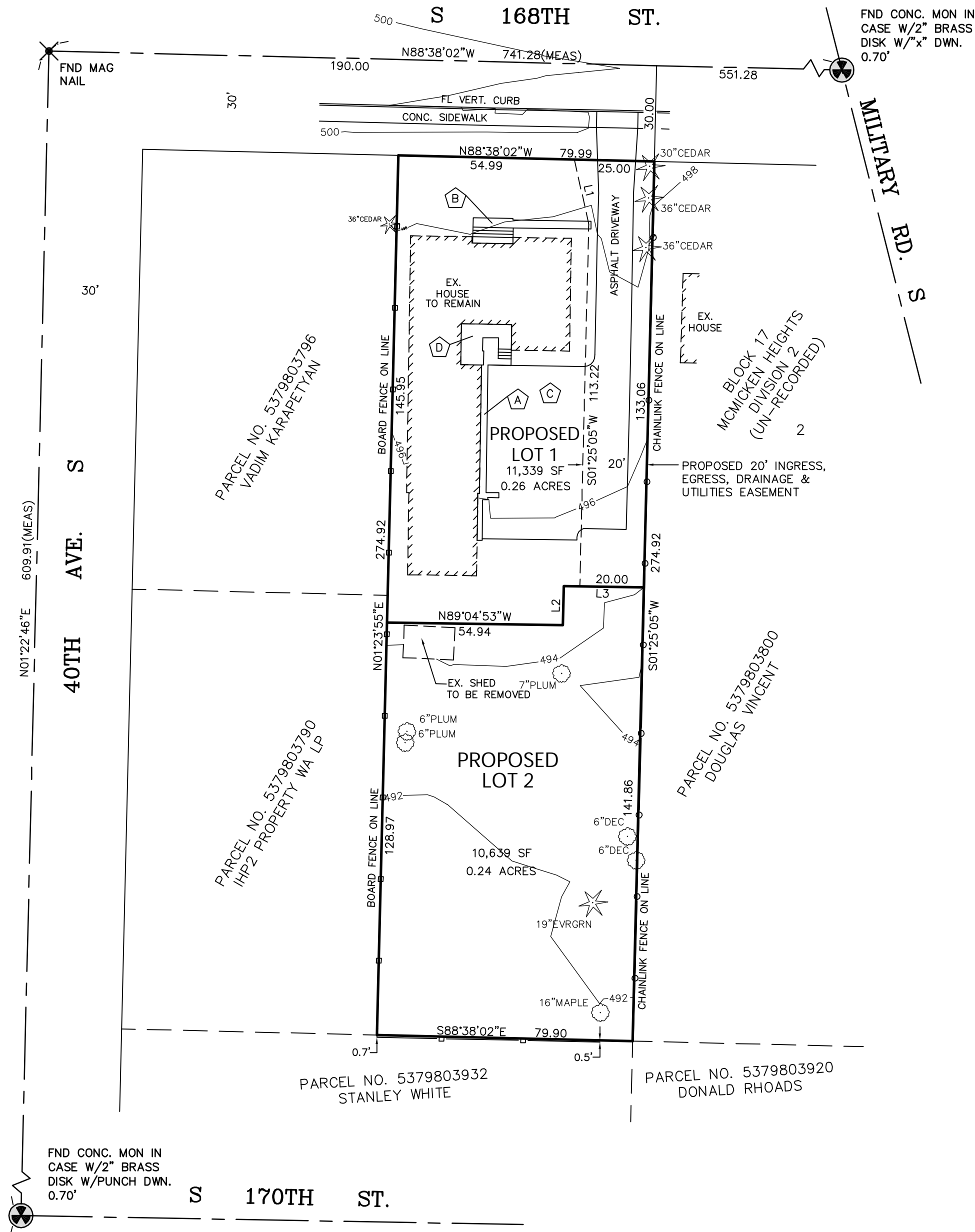


<div><div><div><div><div><div><span></span></div><div><span></span></div></div></div><div><div><div><span></span></div><div><span></span></div></div></div><div><div><div><span></span></div><div><span></span></div></div></div><div><div><div><span></span></div><div><span></span></div></div></div><div><div><div><span></span></div><div><span></span></div></div></div></div></div><div><div><div><span></span></div><div><span></span></div></div></div><div><div><div><span></span></div><div><span></span></div></div></div><div><div><div><span></span></div><div><span></span></div></div></div><div><div><div><span></span></div><div><span></span></div></div></div></div>
---



BAL  
PRELIMINARY SHORT PLAT  
FILE NO.: SUBXX-XXXX

RECORDING NO.	VOL./PAGE
SCALE: N/A	
PORTION OF NE1/4 of SW1/4, SEC. 27, T.23N., R.4E., W.M.	



GRAPHIC SCALE  
( IN FEET )  
1 inch = 30 ft.

- LEGEND
- FOUND MONUMENT AS DESCRIBED
  - SET 5/8" x 24" REBAR AND CAP STAMPED L.S. NO. 35978
  - (MEAS) DENOTES MEASURED DISTANCE

- NOTES:
- CONCRETE WALK TO REMAIN
  - CONCRETE PORCH TO REMAIN
  - ASPHALT DRIVEWAY TO REMAIN
  - DECK TO REMAIN

LINE TABLE		
LINE	LENGTH	BEARING
L1	20.61	S12°37'17"E
L2	12.27	S01°25'05"W
L3	25.00	N89°04'53"W

#### EQUIPMENT & PROCEDURES

METHOD OF SURVEY:  
SURVEY PERFORMED BY FIELD TRAVERSE.

INSTRUMENTATION:  
TOPCON GPL-9005A ELECTRONIC TOTAL STATION AND LEICA GPS RECEIVER. ALL EQUIPMENT HAS BEEN MAINTAINED IN ADJUSTMENT TO MANUFACTURER'S SPECIFICATIONS AS REQUIRED BY WAC 331-130-100.

PRECISION:  
MEETS OR EXCEEDS STATE STANDARDS SET BY WAC 332-130-080 THROUGH 332-130-110

HORIZONTAL DATUM:  
NAD 83/91 WASHINGTON COORDINATE SYSTEM NORTH ZONE 4601.

BASIS OF BEARING:  
THIS SURVEY IS BASED ON RECOVERED MONUMENTATION AS SHOWN. BEARINGS ARE BASED ON THE STATE PLANE COORDINATE SYSTEM (NAD83). ALL MEASURED DISTANCES ARE GROUND.

VERTICAL DATUM - NAVD88:  
NAVD88 PER GPS OBSERVATIONS IN WASHINGTON STATE REFERENCE NETWORK.

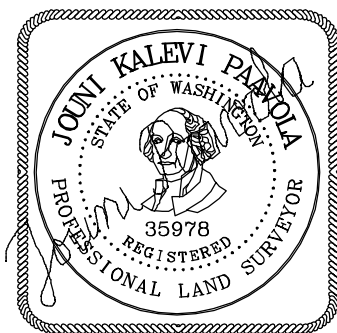
#### REFERENCES

1. UNRECORDED PLAT OF McMICKEN HEIGHTS, DIVISION NO. 2

2. CITY OF SEATAC SHORT PLAT NO. SUB04-00015, AF#20050510900016

#### SURVEYOR'S NOTE:

FOR ADDITIONAL TOPOGRAPHY AND EXISTING AND PROPOSED UTILITIES REFERENCE ENGINEERING PLANS.



**ACREAGE  
LAND  
SURVEYING**

24225 107TH PLACE WEST  
EDMONDS, WA 98020  
(206) 621-3549

**PRITPAL DHALIWAL**

4011 S. 168TH ST.  
SEATAC, WA 98188

DWN. BY B.H.	DATE OCTOBER, 2024	23101
CHKD. BY J.P.	SCALE 1" = 30'	SHEET 2 OF 3

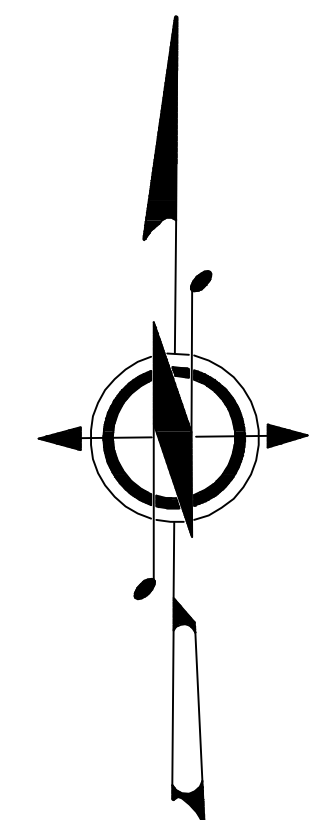
VOL./PAGE



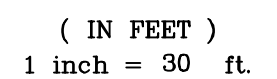
VOL./PAGE

N/A

PORTION OF  
NE1/4 of SW1/4, SEC. 27, T.23N., R.4E., W.M.



GRAPHIC SCALE



### LEGEND



- SET 5/8" x 24" REBAR AND CAP  
STAMPED L.S. NO. 35978  
(MEAS) DENOTES MEASURED DISTANCE

## EQUIPMENT & PROCEDURES

**METHOD OF SURVEY:**

SURVEY PERFORMED BY FIELD TRAVERSE.

**INSTRUMENTATION:**

TOPCON GPL-9005A ELECTRONIC TOTAL STATION AND  
LEICA GPS RECEIVER. ALL EQUIPMENT HAS BEEN  
MAINTAINED IN ADJUSTMENT TO MANUFACTURER'S  
SPECIFICATIONS AS REQUIRED BY WAC 331-130-100.

**PRECISION:**

MEETS OR EXCEEDS STATE STANDARDS SET BY WAC  
332-130-080 THROUGH 332-130-110

HORIZONTAL DATUM:

NAD 83/91 WASHINGTON COORDINATE SYSTEM NORTH  
ZONE 4601.

**BASIS OF BEARING:**

THIS SURVEY IS BASED ON RECOVERED MONUMENTATION AS SHOWN. BEARINGS ARE BASED ON THE STATE PLANE COORDINATE SYSTEM (NAD83). ALL MEASURED DISTANCES ARE GROUND.

FND CONC. MON IN  
CASE W/2" BRASS  
DISK W/PUNCH DWN.  
0.70'



24225 107TH PLACE WEST  
EDMONDS, WA 98020  
(206) 621-3549

PRITPAL DHALIWAL

4011 S. 168TH ST.  
SEATAC, WA 98188

DWN. BY B.H.

DATE	OCTOBER, 2024
------	---------------

23101
-------

CHKD. BY J.P.

SCALE 1" = 30'

SHEET
-------

3 OF 3

VOL./PAGE