

# ENVISION 2044 Transportation Element

## 6/18/2024 Planning Commission Meeting



## POTENTIAL COMMISSION ACTION

**ACTION REQUESTED:** None. The meeting is an informational briefing.

- **REVIEWS TO DATE:**

- 5/11/23 T&PW; 5/23/23 RGC; 12/14/23 T&PW; 1/9/24 RGC





# PRESENTATION OVERVIEW

## PURPOSE OF PRESENTATION

Staff intends to brief commissioners and the public on the 2024 update to SeaTac's Transportation Element (TE) of the Comprehensive Plan, which is currently underway.

## WHY IS THIS ISSUE IMPORTANT?

1. Per the schedule outlined in state statute RCW 36.70A.130, SeaTac is responsible for providing an updated comprehensive plan by 12/31/2024.
2. This project requires constant coordination and alignment with the Envision SeaTac 2044 Comprehensive Plan Update project.
3. The update of the Transportation Element and the Envision SeaTac 2044 Comprehensive Plan Update are separate, concurrent, and interconnected projects.
4. The updated TE+TMP will include an overhauled travel demand model that the City shares with the Port of Seattle providing analysis of post-pandemic changes to the transportation system.



# 2024 TRANSPORTATION ELEMENT UPDATE

## Statutory Distinctions:

- The city's transportation system is guided by local, state, and regional planning requirements.
- Under the Washington State Growth Management Act (GMA), the Transportation Element is a requirement of the City's Comprehensive Plan. RCW 36.70A.070 (6) establishes the minimum requirements for the TE. These requirements are:
  - **Be consistent** with the Land Use Element, including travel forecasts of at least 10-years based on the land use plans;
  - **Identify the impacts** of the City's land use (and transportation) plans on state owned transportation facilities to provide a framework for monitoring the performance of and planning for improvements for the state highways and other state facilities;
  - **Include level of service (LOS)** standards for all locally owned arterials and transit routes to gauge the performance of the systems;
  - **Identify system improvements** to address any LOS deficiencies;
  - **Include a multiyear financing plan** based on the needs identified in the comprehensive plan.



# 2024 TRANSPORTATION ELEMENT UPDATE

## Background:

- Washington State requires periodic reviews and updates to the Comprehensive Plan every ten years.
- The Transportation Element is coordinated with the Land Use, Parks, Recreation, and Open Space, Capital Facilities, and Economic Vitality Elements of the plan.
- The TE provides policies and strategies to guide development of the City's transportation system.
- The Transportation Master Plan (TMP) provides a more detailed blueprint for the City's multimodal transportation system and will be discussed at future meetings.



# 2024 TRANSPORTATION ELEMENT UPDATE

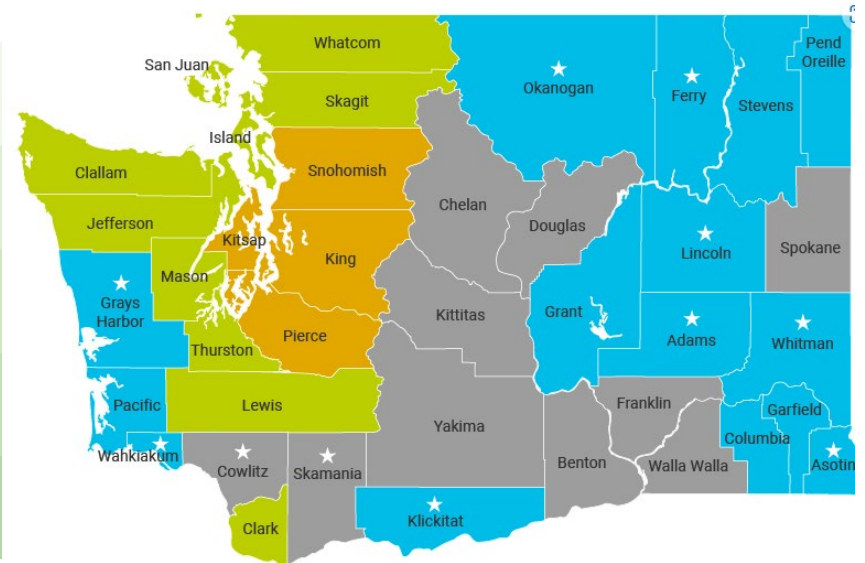
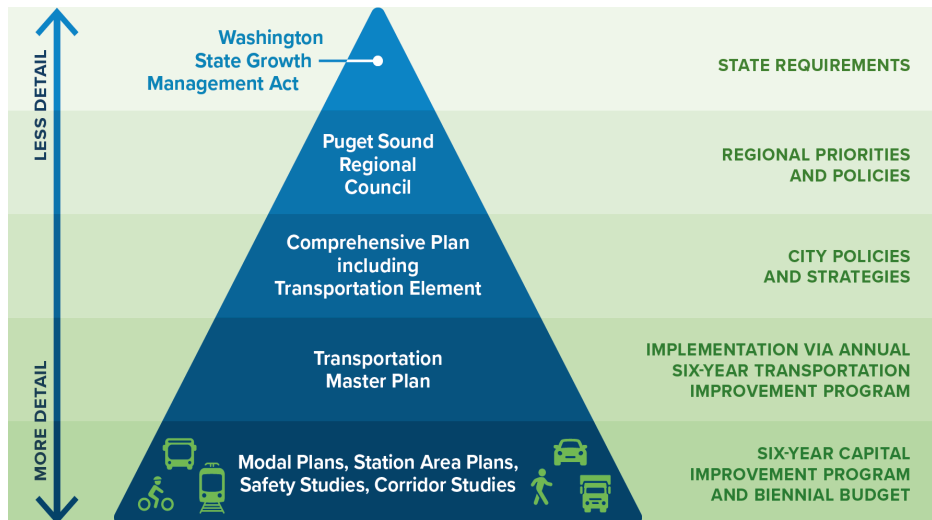
## Background:

- The Transportation Element establishes the broad goals and policies for directing investments in system preservation, operations, safety, and multimodal capital improvements.
- The comprehensive plan identifies the role of regional agencies in providing transportation to the City, and how the City's capital investments support the regional transportation network.
  - It is used by City staff, the Planning Commission, City Council, and the community to establish priorities for transportation investments, work with other agencies, and evaluate development proposals.
  - Both the TMP and TE provide a long-range vision for the City's transportation system.



# 2024 TRANSPORTATION ELEMENT UPDATE

## Separate, concurrent, and interconnected projects: TE and SeaTac 2044 Comprehensive Plan



2024 Due December 31<sup>st</sup> 2025 Due June 30<sup>th</sup> 2026 Due June 30<sup>th</sup> 2027 Due June 31

★ Starred counties are partially planning under the Growth Management Act

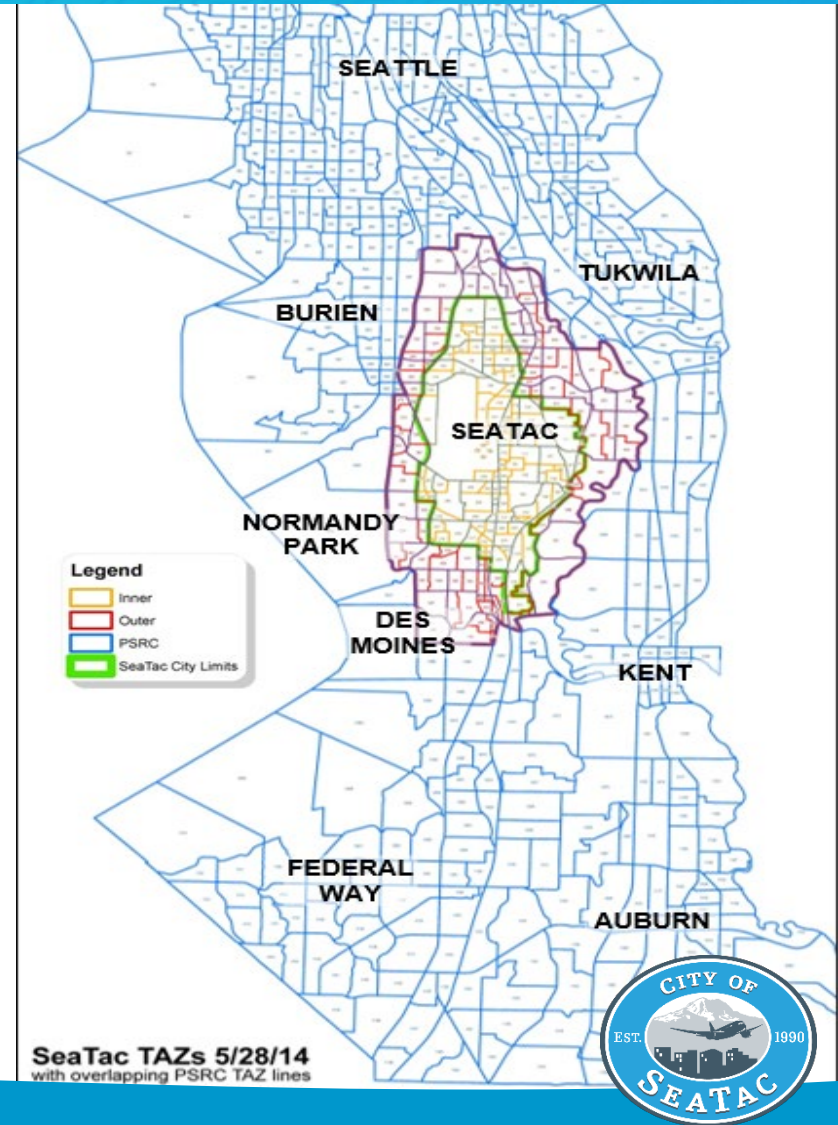
The updated TE+TMP will set the course for the City's transportation policies, programs, and capital facilities for years to come as a background report utilized throughout the comprehensive plan.



# 2024 TRANSPORTATION ELEMENT UPDATE

## Travel Demand Model (TDM):

- City staff are coordinating with the Port of Seattle to ensure the TDM meets the needs of both agencies and is forward compatible with Puget Sound Regional Council's model and industry technology.
- The City and Port of Seattle share the travel demand model. The cost for this task is being shared by both agencies in accordance with Section 4.4 of the 2018 Interlocal Agreement. A letter of concurrence has been executed that documents the cost-sharing arrangement.





# 2024 TRANSPORTATION ELEMENT UPDATE

## Update to Implementation Strategies: Goal/Policy Review

[Current Implementation Strategies - Page T-34 of the Transportation Element.](#)

Goal 2.1	<p><del>For the benefit of SeaTac's residents, businesses, and visitors,</del> Promote the safe and efficient transport of people and goods by implementing and maintaining an integrated multi-modal transportation system that also supports and encourages alternative and active transportation modes <u>for the benefit of SeaTac's residents, businesses, and visitors.</u></p>
----------	---

Policy 4.1B	<p>Develop a multi-modal transportation system that preserves and protects natural resources, reduces adverse impacts on the environment, <u>including air pollution and greenhouse gas emissions,</u> and complies with federal, state, regional, and local policies. <u>Implement green infrastructure to reduce stormwater pollution from transportation facilities where possible.</u></p>
-------------	--



## 2024 TRANSPORTATION ELEMENT UPDATE

Policy 4.2A	<p>Establish a level of service (LOS) standard of:</p> <ul style="list-style-type: none"><li>• Corridor travel speed equating to LOS E or better</li><li>• <u>Intersection delay equating to LOS D or better, except for...</u></li><li>• <u>Non-motorized</u> system completeness</li></ul>
Policy 4.2B	<p>Permit development that is consistent with the <u>2035-2044</u> land use/development assumptions provided that the transportation system operates within the adopted level of service standard as stated in Policy 4.2A. The developments should incorporate the noted design and improvement provisions of the adopted subarea plans.</p>



# 2024 TRANSPORTATION ELEMENT UPDATE

Policy 4.2C	Support and work with WSDOT, the Port of Seattle, and other agencies to encourage the State Legislature to fund and construct <del>the</del> <u>Stage 2 Phase 1</u> of the planned SR 509 Freeway Extension between S. 188th Street and I-5 by 202 <u>5</u> <u>8</u> .
-------------	--

Policy 4.2I	<u>Support and work with WSDOT to maintain and improve I-5 in the City of SeaTac vicinity to serve regional, north-south travel, including freight, High Occupancy Vehicles (HOV), and transit.</u> <del>Continue to rely on I-5 for high volume, north-south, regional travel, including freight, High Occupancy Vehicles (HOV) and transit, in the vicinity of the City of SeaTac.</del>
-------------	--



## 2024 TRANSPORTATION ELEMENT UPDATE

Policy 4.2J	Align classification of streets and arterials to reflect their desired functional use. The functional classification system should be based on the volume of present/future traffic, <del>design, multi-modal facilities,</del> adjacent land uses, and consistency in connections with other agency transportation facilities.
Policy 4.2L	Consolidate access to properties along principal, minor, and collector arterials as opportunities present themselves to maximize the capacity of the facilities and reduce potential safety <u>conflicts, and minimize disruptions to neighborhoods.</u>





## 2024 TRANSPORTATION ELEMENT UPDATE

Policy 4.3A	Upgrade residential neighborhood streets with pedestrian and bicycle facilities and increased access to transit in alignment with <del>pedestrian and bicycle network plan</del> the most current active transportation plan.
----------------	---

### Active ~~Non-Motorized~~ Transportation and Micromobility

Goal 4.4	Plan for and develop a system of <b>active</b> transportation facilities for all users and all modes including pedestrians, transit users and bicyclists. <u>Plan for users of all ages and abilities.</u>
----------	---



# 2024 TRANSPORTATION ELEMENT UPDATE

Policy 4.4B	Coordinate with King County and other agencies to advance construction of <u>Segment F of</u> the Lake to Sound Trail.
Policy 4.4E	Prioritize safety and pedestrian capacity improvements on streets that provide access to schools, parks, transit facilities, public facilities, and within <u>and between the Urban Center Urban Villages and Neighborhood Centers</u> .



## 2024 TRANSPORTATION ELEMENT UPDATE

Policy 4.4F	Develop and implement criteria for installing <u>ADA-compliant</u> pedestrian crossing treatments and appropriate traffic controls to improve safety and comfort throughout the <u>City</u>
Policy 4.4G	Develop and implement a network of bicycle facilities providing for safe, interconnected travel within the <u>City</u> and providing connections to regional facilities and major local destinations as described in the <u><del>Safe and Complete Streets Plan</del> most recent active transportation plan.</u>



# 2024 TRANSPORTATION ELEMENT UPDATE

New Policy 4.4J	<u>Continue to implement the City's ADA Transition Plan and ensure ADA compliance for all capital improvement projects.-</u>
New Policy 4.4K	<u>Identify opportunities for providing enhanced pedestrian and bicycle connectivity that will support the most direct paths to urban villages and station areas.-</u>

Policy 4.5E	<p><u><b>Continuously review developments and trends in transportation technology and mobility patterns for appropriate implementation in SeaTac (e.g., electric vehicle charging infrastructure planning, shared mobility services, hybrid work locations)</b></u></p> <p><del>Coordinate with Sound Transit, Port of Seattle, and the local development community to study, plan, and implement (if deemed feasible) a Personal Rapid Transit (PRT) or similar system serving SeaTac's Urban Center; provided, any proposed system is primarily funded by the private sector, or other non-City sources.</del></p>
-------------	--





# 2024 TRANSPORTATION ELEMENT UPDATE

New Policy	<u>Work with with the Port of Seattle, WSDOT, and regional and local agencies to identify truck parking needs and designate safe truck parking areas, if necessary.</u>
5	<u>Prioritize transportation projects and programs that improve access to and connectivity among Urban Villages and Neighborhood Service Centers.</u>
	<u>Prioritize bicycle and pedestrian improvements that provide low-stress and accessible connections to essential goods and services within a half mile of Urban Villages and Neighborhood Service Centers.</u>
	<u>Look for opportunities to enhance bicycle and pedestrian connectivity in the Urban Center as development occurs</u>



# 2024 TRANSPORTATION ELEMENT UPDATE

Policy 4.7A	<u>Coordinate with the Port of Seattle, state, regional, and local agencies to address air transportation needs in a manner to minimize health, air quality, and noise impacts to the surrounding community, with special consideration given to historically marginalized communities.</u>
----------------	---

DRAFT

SeaTac Comprehensive Plan – Updated Transportation Element Goal and Policy Review Matrix

PM5/4/2024 1:01:00 PM

Existing Goal / Policy #	<b>Transportation Element</b> Draft 1 Existing and Proposed Goal/Policy
	(1) AO = Access to Opportunity; UV = Urban Villages; CN = Comp (2) MPP = PSRC's
	<del>Coordinate with the Port of Seattle, state, regional, and local agencies to encourage swift, collaborative resolution for evaluating air transportation needs and impacts on the City of SeaTac.</del>



## POTENTIAL COMMISSION ACTION

**ACTION REQUESTED:** None. The meeting is an informational briefing.

### STAFF RECOMMENDATION:

- Staff recommends further briefings to commissioners.

### COMMITTEE RECOMMENDATION:

- None at this time.





Questions?

