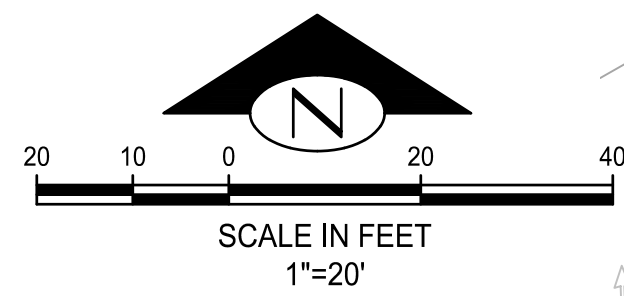
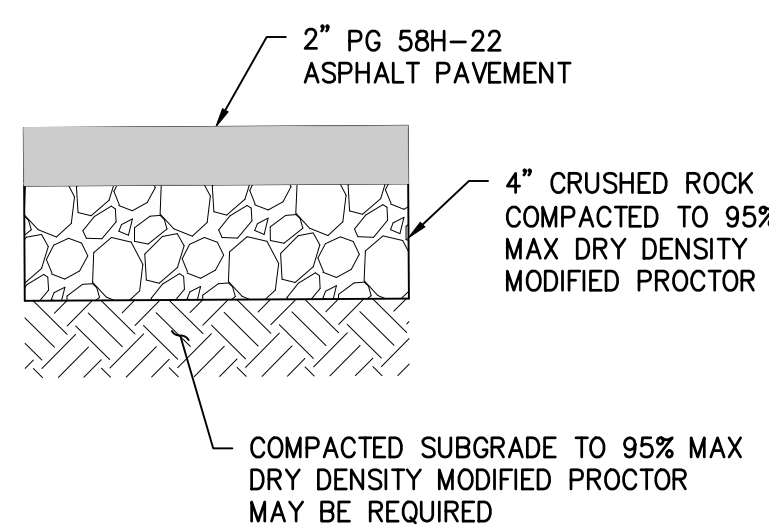


24"x36" 5/12/2023 U:\C3D\2016\2016189\ENGINEERING\0-PLAN SHEETS\1-ON SITE PLANS\02 SITE PLAN.DWG

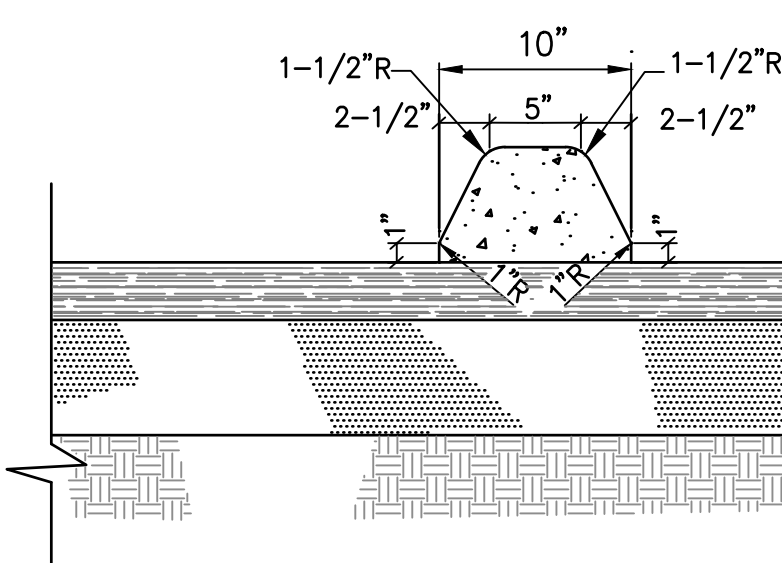


LEGEND:

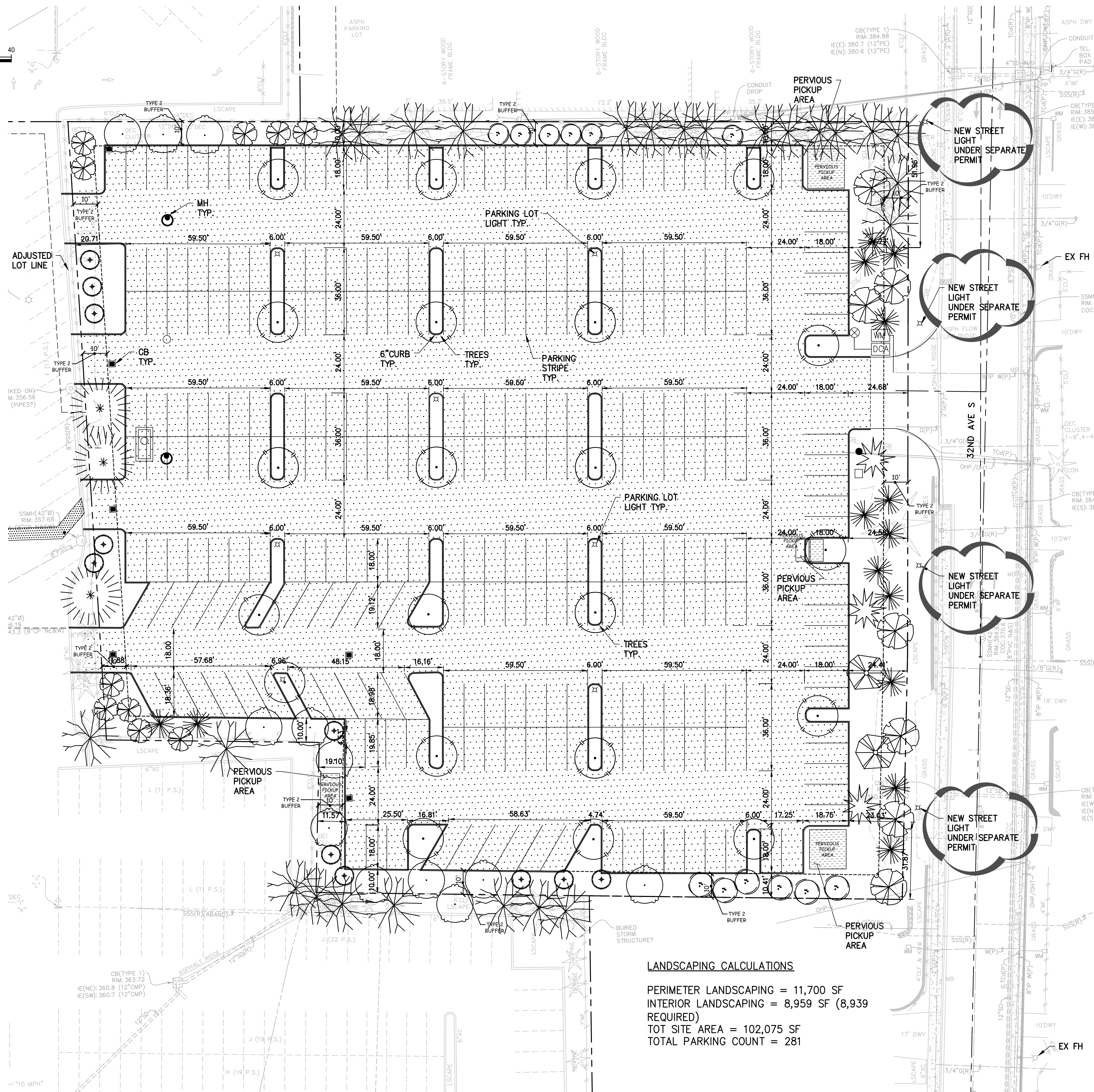
- PICKUP AREA ~ PERVIOUS MATERIAL
- DRIVEWAY ASPHALT PAVEMENT
- WHITE PARKING STRIPE ~ 4" WIDE
- 6" HIGH EXTRUDED CURB
- RETAINING WALL (LESS THAN 4'H)
- PARKING LOT LIGHT (DEFERRED ELECTRICAL PERMIT)
- POWER POLE (PER PSE DESIGN)
- CATCH BASIN PER DRAINAGE PLAN
- MANHOLE PER DRAINAGE PLAN



ASPHALT DETAIL  
SCALE: NTS

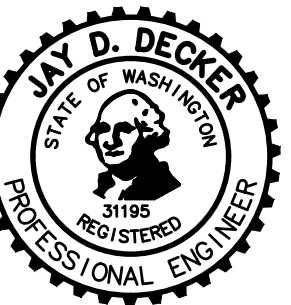


6" HIGH EXTRUDED CURB DETAIL  
SCALE: NTS



LANDSCAPING CALCULATIONS

PERIMETER LANDSCAPING = 11,700 SF  
INTERIOR LANDSCAPING = 8,959 SF (8,939  
REQUIRED)  
TOT SITE AREA = 102,075 SF  
TOTAL PARKING COUNT = 281



**BUSH, ROED & HITCHINGS, INC.**  
LAND SURVEYORS & CIVIL ENGINEERS  
15400 SE 30TH PL, STE 100  
BELLEVUE, Washington 98007  
info@brhinc.com  
(206) 323-4144  
1-800-935-0508  
WWW.BRHINC.COM

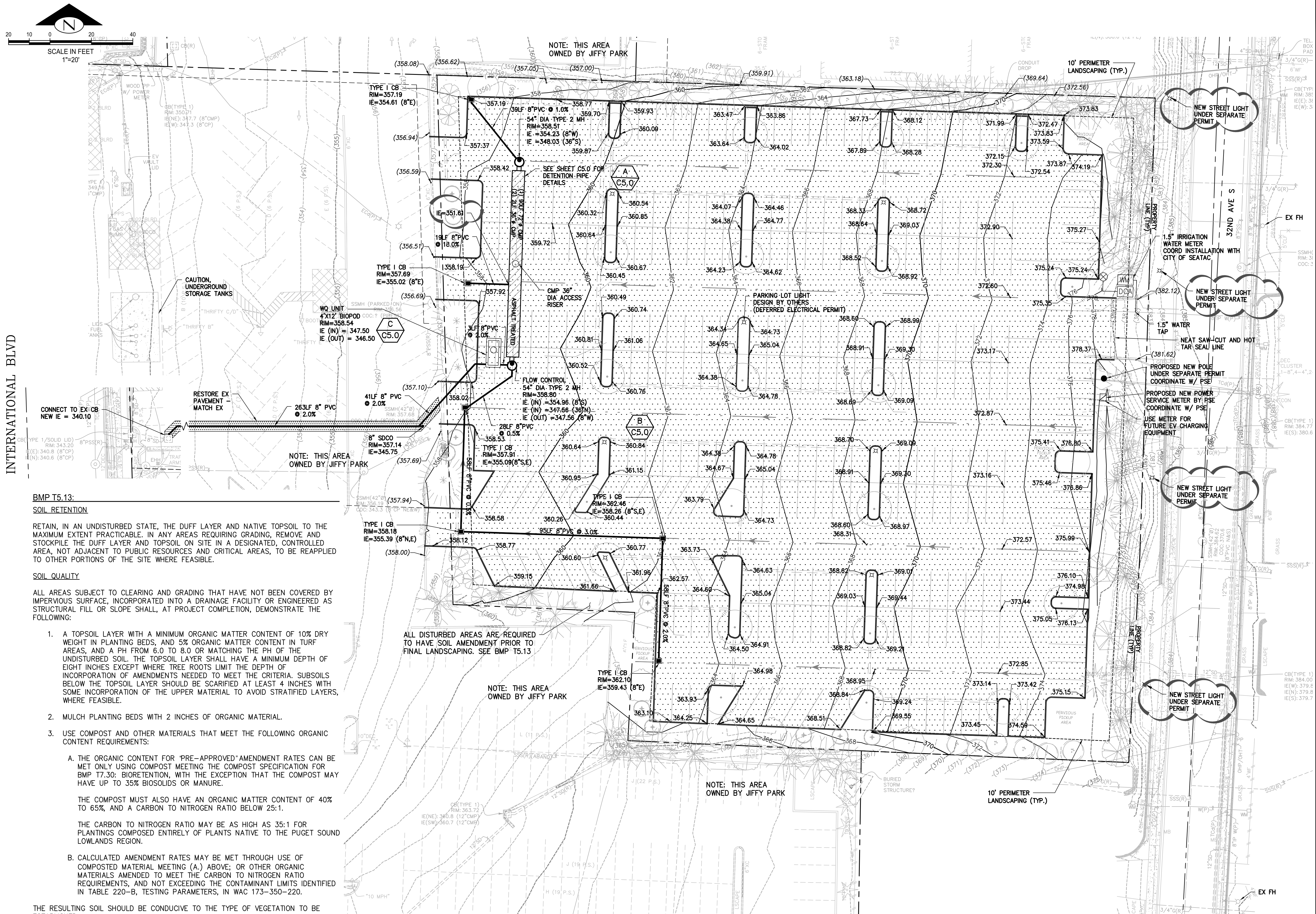
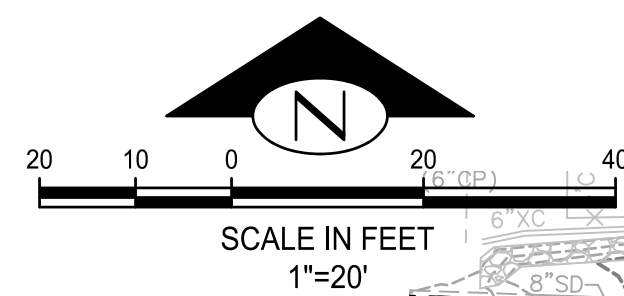


NO.	REVISION	DATE

**SITE PLAN**  
**18836 INTERNATIONAL BLVD**  
SEATAC KING WASHINGTON

drawn by	checked by
MFM	JDD
scale	date
AS SHOWN	05/10/23
job no.	2016189
sheet	C2.0 of 8





BMP T5.13:

## SOIL RETENTION

RETAIN, IN AN UNDISTURBED STATE, THE DUFF LAYER AND NATIVE TOPSOIL TO THE MAXIMUM EXTENT PRACTICABLE. IN ANY AREAS REQUIRING GRADING, REMOVE AND STOCKPILE THE DUFF LAYER AND TOPSOIL ON SITE IN A DESIGNATED, CONTROLLED AREA, NOT ADJACENT TO PUBLIC RESOURCES AND CRITICAL AREAS, TO BE REAPPLIED TO OTHER PORTIONS OF THE SITE WHERE FEASIBLE.

SOIL QUALITY

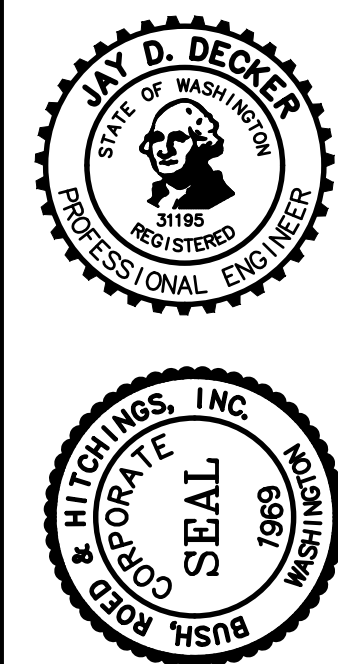
ALL AREAS SUBJECT TO CLEARING AND GRADING THAT HAVE NOT BEEN COVERED BY IMPERVIOUS SURFACE, INCORPORATED INTO A DRAINAGE FACILITY OR ENGINEERED AS STRUCTURAL FILL OR SLOPE SHALL, AT PROJECT COMPLETION, DEMONSTRATE THE FOLLOWING:

1. A TOPSOIL LAYER WITH A MINIMUM ORGANIC MATTER CONTENT OF 10% DRY WEIGHT IN PLANTING BEDS, AND 5% ORGANIC MATTER CONTENT IN TURF AREAS, AND A PH FROM 6.0 TO 8.0 OR MATCHING THE PH OF THE UNDISTURBED SOIL. THE TOPSOIL LAYER SHALL HAVE A MINIMUM DEPTH OF EIGHT INCHES EXCEPT WHERE TREE ROOTS LIMIT THE DEPTH OF INCORPORATION OF AMENDMENTS NEEDED TO MEET THE CRITERIA. SUBSOILS BELOW THE TOPSOIL LAYER SHOULD BE SCARIFIED AT LEAST 4 INCHES WITH SOME INCORPORATION OF THE UPPER MATERIAL TO AVOID STRATIFIED LAYERS, WHERE FEASIBLE.
2. MULCH PLANTING BEDS WITH 2 INCHES OF ORGANIC MATERIAL.
3. USE COMPOST AND OTHER MATERIALS THAT MEET THE FOLLOWING ORGANIC CONTENT REQUIREMENTS:
  - A. THE ORGANIC CONTENT FOR "PRE-APPROVED" AMENDMENT RATES CAN BE MET ONLY USING COMPOST MEETING THE COMPOST SPECIFICATION FOR BMP 17.30: BIORETENTION, WITH THE EXCEPTION THAT THE COMPOST MAY HAVE UP TO 35% BIOSOLIDS OR MANURE.

THE COMPOST MUST ALSO HAVE AN ORGANIC MATTER CONTENT OF 40% TO 65%, AND A CARBON TO NITROGEN RATIO BELOW 25:1.

THE CARBON TO NITROGEN RATIO MAY BE AS HIGH AS 35:1 FOR PLANTINGS COMPOSED ENTIRELY OF PLANTS NATIVE TO THE PUGET SOUND LOWLANDS REGION.
  - B. CALCULATED AMENDMENT RATES MAY BE MET THROUGH USE OF COMPOSTED MATERIAL MEETING (A.) ABOVE; OR OTHER ORGANIC MATERIALS AMENDED TO MEET THE CARBON TO NITROGEN RATIO REQUIREMENTS, AND NOT EXCEEDING THE CONTAMINANT LIMITS IDENTIFIED IN TABLE 220-B, TESTING PARAMETERS, IN WAC 173-350-220.

THE RESULTING SOIL SHOULD BE CONDUCIVE TO THE TYPE OF VEGETATION TO BE ESTABLISHED.



**BUSH, ROED & HITCHINGS, INC.**  
**LAND SURVEYORS & CIVIL ENGINEERS**

---

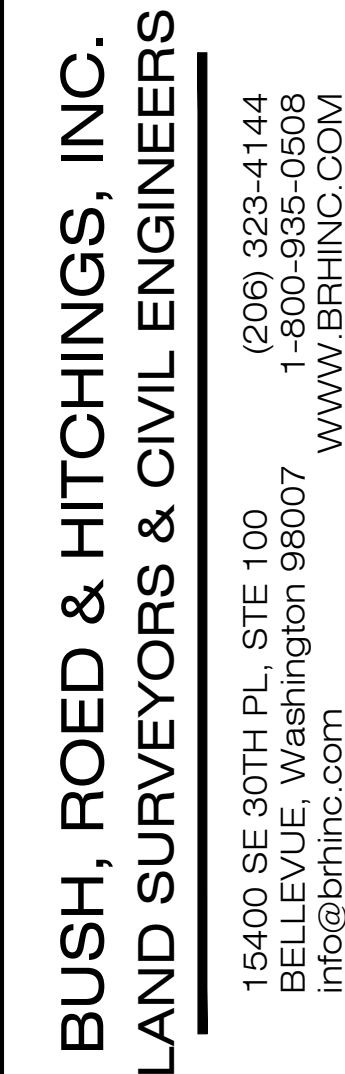
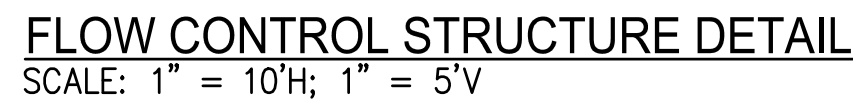
15400 SE 30TH PL., STE 100  
BELLEVUE, Washington 98007  
info@brhinc.com (206) 323-4144  
1-800-935-0508  
WWW.BRHINC.COM




GRADING/DRAINAGE PLAN

drawn by <b>MFM</b>	checked by <b>JDD</b>
scale <b>AS SHOWN</b>	date <b>05/10/2016</b>
job no. <b>2016189</b>	
sheet <b>C4.0</b> of <b>8</b>	



[illegible]

DRAINAGE DETAILS  
18836 INTERNATIONAL BLVD  
SEATAC KING WASHINGTON

drawn by <b>MFM</b>	checked by <b>JDD</b>
scale <b>AS SHOWN</b>	date <b>05/10/07</b>
job no. <b>2016189</b>	
sheet <b>C5.0</b> of <b>8</b>	



ORIENT SHRUB FOR BEST APPEARANCE. REMOVE ALL BROKEN, DEAD STEMS DO NOT DISFIGURE PLANT

PROVIDE SLIGHT WATERING SAUCER AROUND 5 GALLON AND LARGER PLANTS 2" HT. TYP.

2" DEPTH PREPARED TOPSOIL

IF PLANT IS BALLED AND BURLAPED THEN REMOVE TREATED BURLAP. FOLD BACK NATURAL BURLAP OFF TOP OF ROOTBALL. FINISH GRADE

2x2 HEM-FIR STAKE DRIVEN TO REFUSAL. SECURE TO TREE WITH GALVANIZED WIRE ENCASED IN REINFORCED DULL GREEN RUBBER HOSE AT POINT OF PLANT CONTACT. TOP OF STAKE TO POINT TO PREVAILING WIND.

MULCH (1/2" DEPTH IF RHODOS OR AZALEAS.)

6" MIN. BELOW ROOTBALL

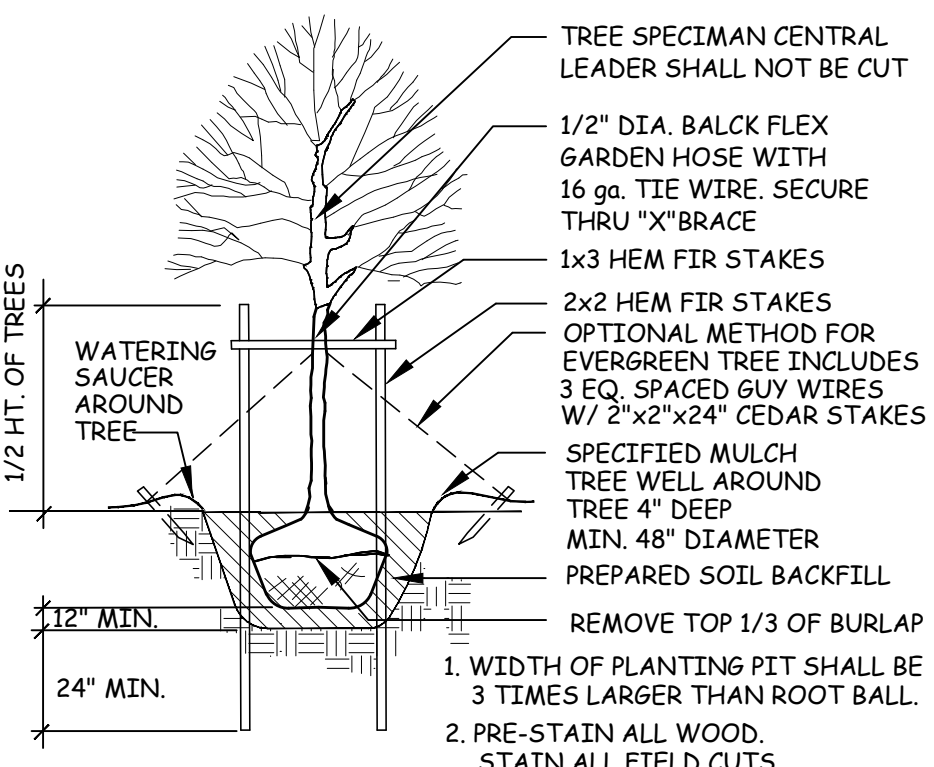
3" BERM

6" MIN. FROM SIDE OF ROOTBALL PREPARED SOIL BACKFILL

EXISTING SUBGRADE

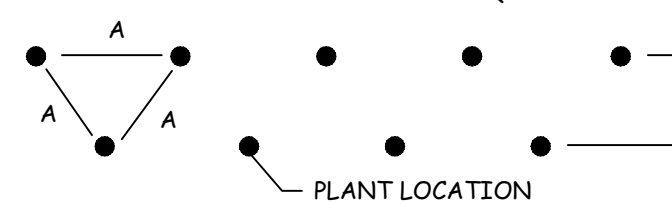
5 TYPICAL SHRUB PLANTING L-1 SCALE: N.T.S.

4 TYP. CONIFEROUS TREE PLANTING L-1 SCALE: N.T.S.



SPACING "A"	SPACING "B"	# OF PLANTS/SF
6" o.c.	5.20"	4.60
8" o.c.	6.93"	2.60
10" o.c.	8.66"	1.66
12" o.c.	10.40"	1.15
15" o.c.	13.00"	.738
18" o.c.	15.60"	.512
24" o.c.	20.80"	.290
30" o.c.	26.00"	.185
36" o.c.	30.00"	.116

SEE GROUNDCOVER PLANT KEY FOR MAXIMUM TRIANGULAR SPACING "A". THIS CHART IS TO BE USED TO DETERMINE NUMBER OF GROUNDCOVER PLANTS REQUIRED IN A GIVEN AREA.



PLANT SPACING CHART FOR USE WHEN PLANTS ARE SPACED EQUIDISTANT FROM EACH OTHER, AS IN ALL MASSED SHRUB/GROUNDCOVER PLANTINGS

2 PLANT SPACING CHART L-1 SCALE: N.T.S.

3 TYP. DECIDUOUS TREE PLANTING L-1 SCALE: N.T.S.

## PLANT LIST

April 9, 2022, November 25, 2022, January 27, 2023, May 10, 2023

QUAN	PLANT SYMBOL	PLANT NAME	SIZE SPACING
16	ABIES	ABIES GRANDIS/ GRAND FIR	8' B/B
47	ARCM	ARCTOSTAPHYLOS SUNSET MANZANITA	ONE GALLON CAN, 36" TRI SP.
290	AUU	ARCTOSTAPHYLOS UVA URSI MASSACHUSETTS	1 GALLON 24" TRI SPACING ON CAN
38	BERBWP	BERBERIS WILLIAM PENN WILLIAM PENN BARBERRY	5 GALLON CAN 36" TRI SP.
32	BERB	BERBERIS THUNBERGII BARBERRY	5 GALLON CAN 36" TRI SP.
230	COTD	COTONEASTER DAMMERI	1 GALLON AT 24" TRI SP
10	COTP	COTONEASTER PARNEYI/ PARNEY COTONEASTER	5 GALLON, 24" HEIGHT & WIDTH, 5" SPACING
14	OSM	OSMANTHUS GOSHIKI	5 GALLON, 18" HEIGHT, 5 FEET TRI. CENTER
3	GINK	GINKGO BILOBA GINKO	2" CALIPER
668	GSH	GAULTHERIA SHALLON SALAL	4" pots, 12" TRI SP.
47	MAH	MAHONIA AQUIFOLIUM/ TALL OREGON GRAPE	5 GALLON CAN 48" TRI SP
437	MAHR	MAHONIA REPANS	1 GALLON CAN 18" TRI SP
24	MYR	MYRICA CALIFORNICA/ BAY LAUREL	5 GALLON CAN, FULL, 24" HEIGHT, 5" TRI SP
3	NYS	NYSSA SYLVATICA RED RAGE/ RED RAGE TUPELO	2.0" CALIPER
7	PRUNE	PRUNUS EMARGINATA/ BITTER CHERRY	2" B/B
284	PRUNO	PRUNUS LAUROCERACUS OTTOLUYKEN/ OTTOLUYKEN LAUREL	12-16" b/b
2	PSE	PSEUDOTSUGA MENZEISII/ DOUGLAS FIR	8' B/B
11	PIC	PICEA CUPRESSINA/ COLUMNAR NORWAY SPRUCE	8' B/B
16	PYR	THUJA PYRAMIDALIS EMERALD GREEN	5" TO 6 B/B, 2-6" OC
12	QUERF	QUERCUS ROBUR FASTIGIATA/ COLUMNAR OAK	2.0" CALIPER, 10' TO 12', B/B
17	RIB	RIBES SANGUINEUM CURRENT	5 GALLON CAN, 5' TRI SP
22	ROB	ROBINIA PSEUDOACACIA SUNBURST LOCUST	2.0" CALIPER
18	SYMP	SYMPHIOCARPUS ALBUS SNOWBERRY	ONE GALLON, 30" ON CENTER
10	THUJ	THUJA PLICATA HOGAN	8' B/B
13	TSUG	TSUGA MERTENSIANA/ MOUNTAIN HEMLOCK	8' B/B

## NOTES:

### LANDSCAPING

In new landscape areas: Provide 2" depth of composted organic material and rototill into the subgrades to a depth of 6 inches. Over the top of the prepared subgrades provide an additional 6" of Pacific Topsoils 60/40 soil or approved equal.

Provide layout of plant material for approval of the landscape architect. Substitutions of plant material without prior authorization is not allowed and the plant material removed without compensation.

Install plants for best orientation and clean uniform rows at proper planting depth.

Upon approval of the final planting layout, provide 2" depth Pacific Topsoils Dark Fine Mulch or approved equal. Provide one year warranty on all paving and planting.

### IRRIGATION

All areas will be irrigated.

### CALL BEFORE YOU DIG

Call 811 or 1800 424 5555 at least two business days prior to digging operations. Provide ticket number.

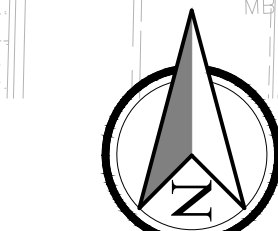
### LANDSCAPING CALCULATIONS

PERIMETER LANDSCAPING	=	11,700 sf
INTERIOR LANDSCAPING	=	8,959 sf (8,939 required)
TOTAL SITE AREA	=	102,075 sf
TOTAL PARKING COUNT	=	281

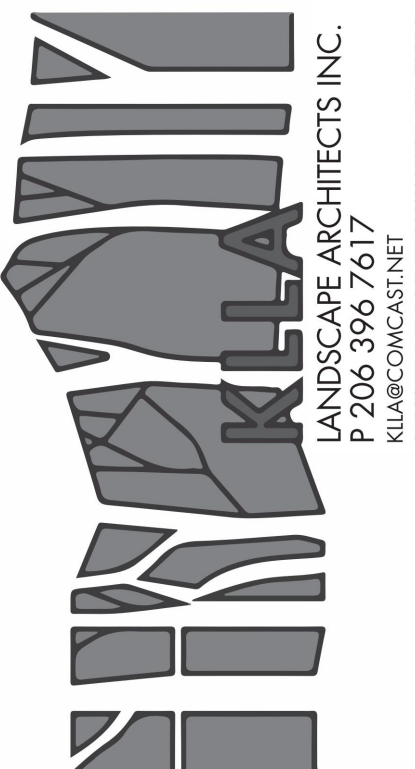
## LANDSCAPE PLAN

1 L-1.0

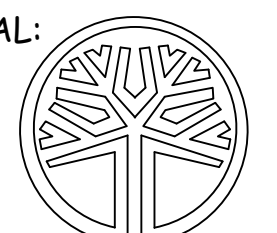
SCALE: 1" = 20'-0"



0 20 40  
PLAN IN FEET



## SEAL:



STATE OF WASHINGTON  
REGISTERED  
LANDSCAPE ARCHITECT  
KENNETH E. LARGE  
KLIA LANDSCAPE ARCHITECTS INC.  
CERTIFICATE #301

JIFFY PARK  
18836 INTERNATIONAL BLVD.  
SEATAC WASHINGTON

JOB NUMBER: KEL

DRAWN: \_\_\_\_\_

CHECKED: \_\_\_\_\_

DATE: April 27, 2022

REVISIONS:

1	Base Plan - 12/01/2022
2	Buffer/Trees - 02/03/23
3	New Layout - 05/10/23

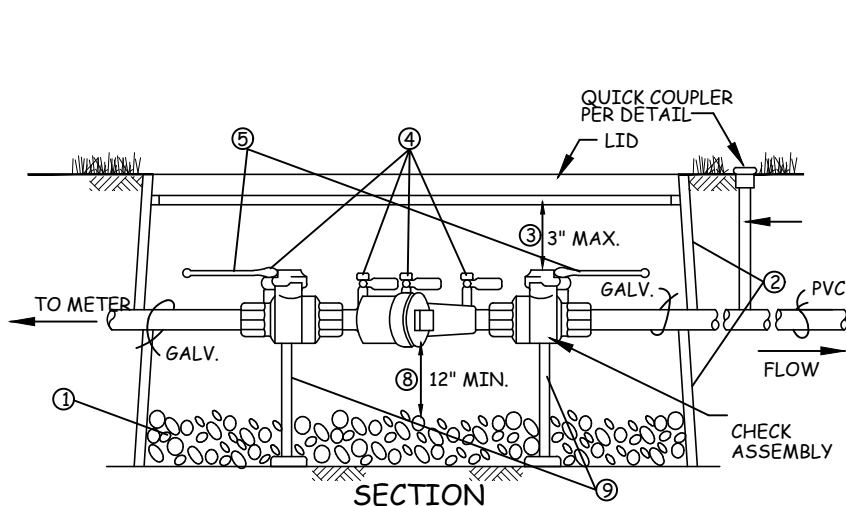
SHEET TITLE:  
LANDSCAPE PLAN

PERMIT SET

SHEET NUMBER:

L-1.0





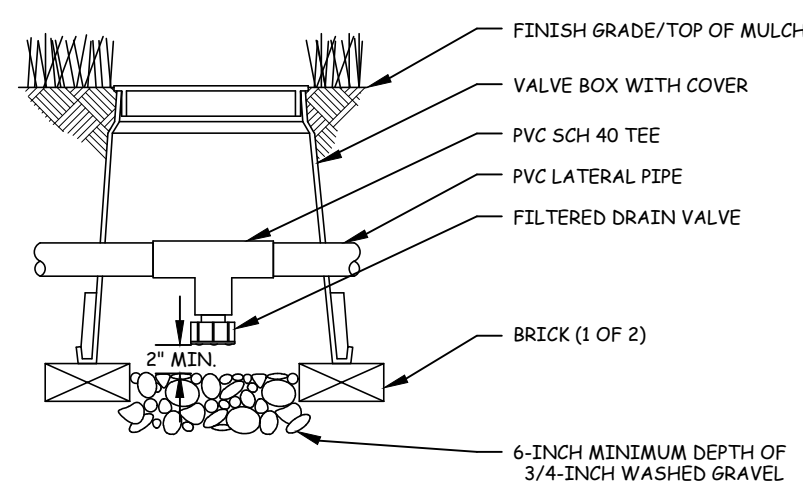
SECTION

NOTES:

1. INSTALL ACCORDING TO MANUFACTURER'S SPECIFICATIONS.
2. ALL INSTALLATION MUST MEET MINIMUM STANDARDS OF UNIFORM PLUMBING CODE & WATER DISTRICT.
3. ASSEMBLY REQUIRES TESTING AND CERTIFICATION PRIOR TO USE AND ANNUALLY THEREAFTER. FOR INFORMATION CONTACT WATER QUALITY TECHNICIAN.
4. APPLY AND PAY FOR ALL REQUIRED PERMITS
5. 1" DOUBLE CHECK ASSEMBLY

POINT OF CONNECTION (DCA)

SCALE: N.T.S.



DRAIN VALVE

SCALE: N.T.S.

IRRIGATION FLOW CHART

THE FOLLOWING CHART IS TO BE USED BY THE CONTRACTOR FOR SIZING LATERAL PIPE. WHEN USING THIS CHART DO NOT EXCEED A VELOCITY OF 5 FEET PER SECOND. THIS CHART REPRESENTS THE FRICTION LOSS PER 100 FEET OF PIPE. THE CONTRACTOR SHALL CALCULATE GALLONAGE USING THE HEADS SHOWN ON THE PLAN.

FLOW G.P.M.	VELOCITY F.P.S.	P.S.I. LOSS	VELOCITY F.P.S.	P.S.I. LOSS	VELOCITY F.P.S.	P.S.I. LOSS	VELOCITY F.P.S.	P.S.I. LOSS	VELOCITY F.P.S.	P.S.I. LOSS	VELOCITY F.P.S.	P.S.I. LOSS
1	0.47	0.06	0.28	0.02	0.18	0.01	0.13	0.00	0.07	0.01	0.05	0.00
2	0.94	0.22	0.57	0.07	0.36	0.02	0.27	0.01	0.17	0.02	0.12	0.01
3	1.42	0.46	0.86	0.14	0.54	0.04	0.41	0.02	0.26	0.01	0.18	0.01
4	1.89	0.79	1.15	0.26	0.72	0.08	0.55	0.04	0.35	0.01	0.24	0.01
5	2.36	1.20	1.44	0.36	0.90	0.12	0.68	0.06	0.44	0.02	0.30	0.01
6	2.83	1.68	1.73	0.51	1.08	0.16	0.82	0.08	0.53	0.03	0.36	0.01
7	3.30	2.23	2.02	0.67	1.26	0.22	0.96	0.11	0.61	0.04	0.42	0.01
8	3.77	2.85	2.30	0.86	1.44	0.28	1.10	0.14	0.70	0.05	0.48	0.01
9	4.25	3.55	2.59	1.07	1.62	0.34	1.24	0.18	0.79	0.06	0.54	0.01
10	4.72	4.31	2.88	1.30	1.80	0.42	1.37	0.22	0.88	0.07	0.60	0.01
11	5.19	5.15	3.17	1.56	1.98	0.50	1.51	0.26	0.97	0.09	0.66	0.01
12	5.65	6.06	3.46	1.83	2.17	0.59	1.65	0.30	1.06	0.10	0.72	0.01
14	6.60	8.05	4.04	2.43	2.53	0.78	1.92	0.40	1.23	0.14	0.84	0.01
16	7.55	10.30	4.61	3.11	1.89	1.00	2.20	0.52	1.41	0.17	0.96	0.01
18	8.49	12.81	5.19	3.87	3.23	1.24	2.40	0.64	1.59	0.22	1.08	0.01
20	9.43	15.58	5.77	4.71	3.61	1.51	2.75	0.74	1.76	0.26	1.20	0.01
22	10.38	18.53	6.34	5.52	3.97	1.80	3.03	0.83	1.94	0.32	1.32	0.01
24	11.32	21.83	6.92	6.60	4.34	2.12	3.30	1.09	2.12	0.37	1.44	0.01
26	12.27	25.32	7.50	7.65	4.70	2.46	3.58	1.27	2.29	0.43	1.56	0.01
28	13.21	29.04	8.08	8.78	5.06	2.82	3.86	1.46	2.47	0.49	1.68	0.01
30	14.15	33.00	8.86	9.99	5.43	3.20	4.13	1.66	2.65	0.56	1.80	0.01
35	16.51	43.91	10.10	13.27	6.32	4.26	4.82	2.20	3.08	0.75	2.16	0.01
40	18.37	56.23	10.54	17.00	7.23	5.45	5.51	2.82	3.53	0.96	2.48	0.01
45			12.58	21.24	8.13	6.78	6.20	3.51	3.97	1.19	2.80	0.01
50			14.42	25.70	9.04	8.24	6.89	4.26	4.41	1.44	3.12	0.01
55			15.57	30.66	9.94	9.83	7.56	5.08	4.85	1.72	3.44	0.01
60			17.31	36.02	10.23	11.58	8.27	5.37	5.30	2.02	3.76	0.01
65			18.75	41.77	11.75	13.40	8.96	6.93	5.74	2.35	4.08	0.01
70					12.88	15.37	9.65	7.96	6.18	2.63	4.40	0.01
75					13.56	17.47	10.24	9.03	6.63	3.06	4.72	0.01
80					14.46	19.04	11.03	10.18	7.08	3.44	5.04	0.01
85					15.27	22.02	11.75	11.28	7.50	3.88	5.36	0.01

SIZE	3/4"	1"	1-1/4"	1-1/2"	2"
OD	1.050	1.315	1.650	1.900	2.375
ID	0.930	1.189	1.502	1.720	2.149

IRRIGATION FLOW CHART

SCALE: N.T.S.

## IRRIGATION LEGEND

All shrub zone nozzles shall be installed on

Rainbird 1806 spray bodies

End strip spray

Side strip spray

Rainbird 1800 1/2, 1/4, 3/8, full and variable angle

variable radius nozzles. The nozzle arc and arc

distance are not shown.

RVAN 318 on 1806 shrub body

CONTROLLER:

Rainbird ESP w/ wireless rain shut off,

Mount to outside of building

DOUBLE CHECK VALVE ASSEMBLY

Double check assembly

MAINLINE: 1-1/2" SCH. 40 PVC Pipe/Solvent Weld. Tie into existing mainline as shown. Plan shows diagrammatic location

LATERAL: Class 200 PVC Pipe/ Solvent Weld, minimum 3/4" diameter size, as noted or per velocity sizing chart.

SLEEVE PER DETAIL

ZONE VALVES (24VAC Electric):

Rainbird PEB series 1" for 10-20 gpm,

Rainbird XCZ 100 PRBR for drip zones

1" QUICK COUPLING VALVE:

Rain Bird #44: Install in 12"

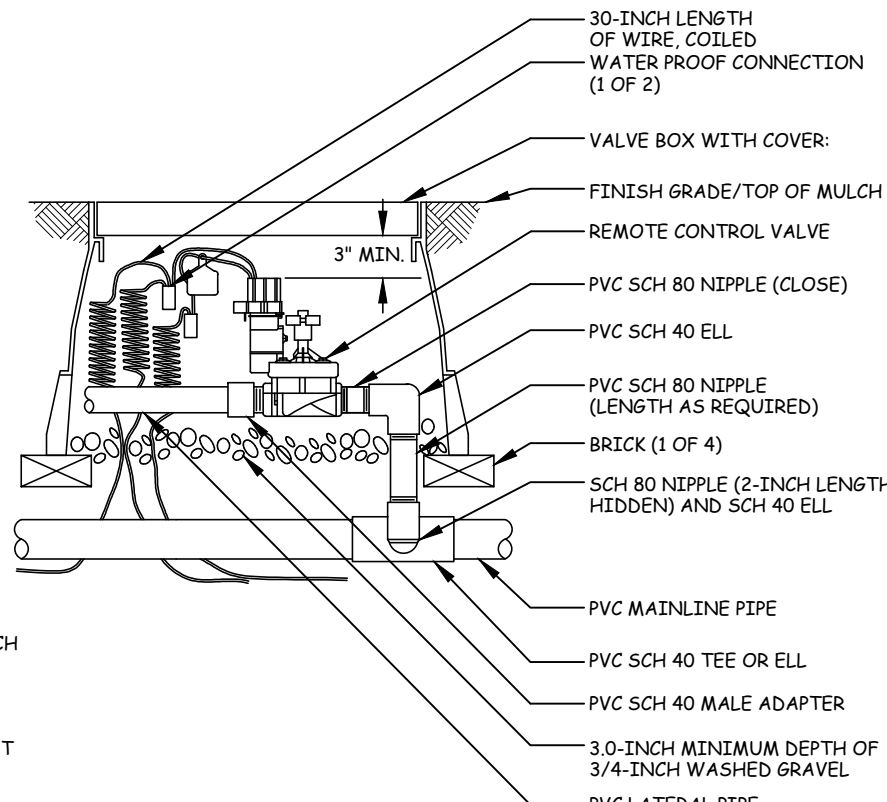
Standard valve Box

ISOLATION GATE VALVES:

3" 150 psi WOG Brass Gate Valve, FIPT X FIPT, with

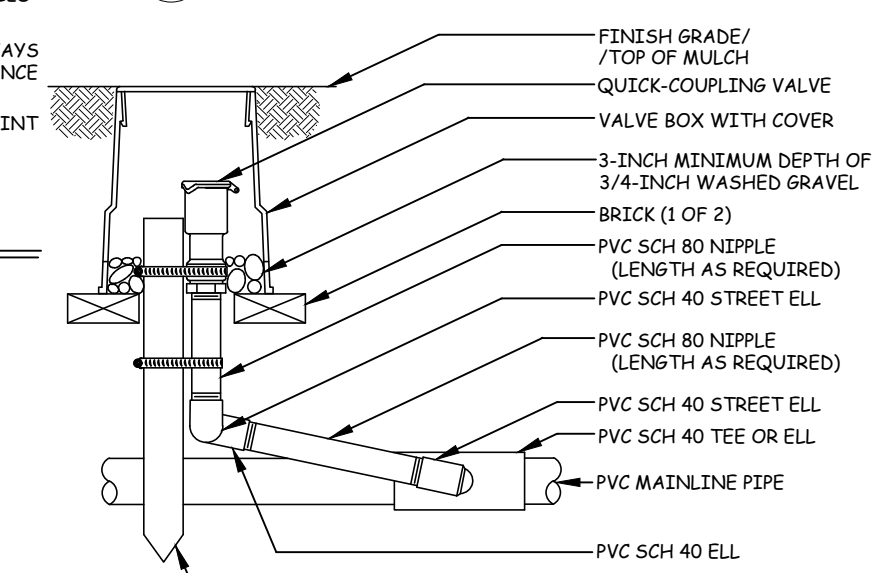
handwheel & rising stem. Place in valve box

DRAIN VALVE: see detail



TYP. REMOTE CONTROL VALVE

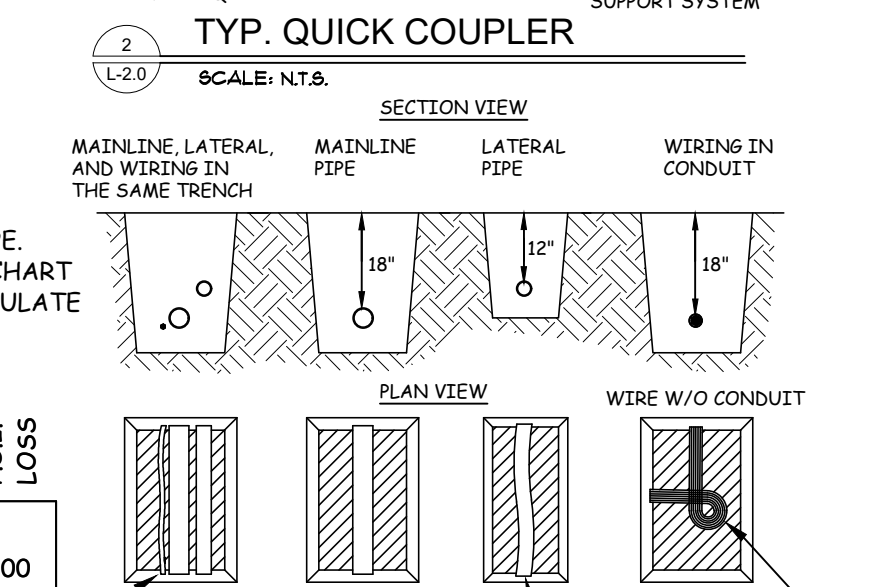
SCALE: N.T.S.



NOTE: 1. FURNISH FITTINGS AND PIPING NOMINALLY SIZED IDENTICAL TO NOMINAL QUICK COUPLING VALVE INLET SIZE.

TYP. QUICK COUPLER

SCALE: N.T.S.



NOTE: 1. SLEEVE BELOW ALL HARDSCAPE ELEMENTS WITH TYPE 3034 PVC TWICE THE DIAMETER OF THE PIPE OR WIRE BUNDLE WITHIN.

2. FOR PIPE AND WIRE BUNDLES DEPTHS SEE SPECIFICATIONS.

3. ALL SOLVENT WELD JOINTS TO BE SNAKED IN TRENCH AS SHOWN.

4. TIE A 24-INCH LOOP IN ALL WIRING AT CHANGES OF DIRECTION OF 30° OR GREATER. UNTIE AFTER ALL CONNECTIONS HAVE BEEN MADE.

5. RUN WIRING BENEATH AND BESIDE MAINLINE PLASTIC PIPING TO BE SNAKED IN TRENCH AS SHOWN.

6. TIE A 24-INCH LOOP IN ALL WIRING AT CHANGES OF DIRECTION OF 30° OR GREATER. UNTIE AFTER ALL CONNECTIONS HAVE BEEN MADE.

7. TIE A 24-INCH LOOP IN ALL WIRING AT CHANGES OF DIRECTION OF 30° OR GREATER. UNTIE AFTER ALL CONNECTIONS HAVE BEEN MADE.

8. TIE A 24-INCH LOOP IN ALL WIRING AT CHANGES OF DIRECTION OF 30° OR GREATER. UNTIE AFTER ALL CONNECTIONS HAVE BEEN MADE.

9. TIE A 24-INCH LOOP IN ALL WIRING AT CHANGES OF DIRECTION OF 30° OR GREATER. UNTIE AFTER ALL CONNECTIONS HAVE BEEN MADE.

10. TIE A 24-INCH LOOP IN ALL WIRING AT CHANGES OF DIRECTION OF 30° OR GREATER. UNTIE AFTER ALL CONNECTIONS HAVE BEEN MADE.

11. TIE A 24-INCH LOOP IN ALL WIRING AT CHANGES OF DIRECTION OF 30° OR GREATER. UNTIE AFTER ALL CONNECTIONS HAVE BEEN MADE.

12. TIE A 24-INCH LOOP IN ALL WIRING AT CHANGES OF DIRECTION OF 30° OR GREATER. UNTIE AFTER ALL CONNECTIONS HAVE BEEN MADE.

13. TIE A 24-INCH LOOP IN ALL WIRING AT CHANGES OF DIRECTION OF 30° OR GREATER. UNTIE AFTER ALL CONNECTIONS HAVE BEEN MADE.

14. TIE A 24-INCH LOOP IN ALL WIRING AT CHANGES OF DIRECTION OF 30° OR GREATER. UNTIE AFTER ALL CONNECTIONS HAVE BEEN MADE.

15. TIE A 24-INCH LOOP IN ALL WIRING AT CHANGES OF DIRECTION OF 30° OR GREATER. UNTIE AFTER ALL CONNECTIONS HAVE BEEN MADE.

16. TIE A 24-INCH LOOP IN ALL WIRING AT CHANGES OF DIRECTION OF 30° OR GREATER. UNTIE AFTER ALL CONNECTIONS HAVE BEEN MADE.

17. TIE A 24-INCH LOOP IN ALL WIRING AT CHANGES OF DIRECTION OF 30° OR GREATER. UNTIE AFTER ALL CONNECTIONS HAVE BEEN MADE.

18. TIE A 24-INCH LOOP IN ALL WIRING AT CHANGES OF DIRECTION OF 30° OR GREATER. UNTIE AFTER ALL CONNECTIONS HAVE BEEN MADE.

19. TIE A 24-INCH LOOP IN ALL WIRING AT CHANGES OF DIRECTION OF 30° OR GREATER. UNTIE AFTER ALL CONNECTIONS HAVE BEEN MADE.

20. TIE A 24-INCH LOOP IN ALL WIRING AT CHANGES OF DIRECTION OF 30° OR GREATER. UNTIE AFTER ALL CONNECTIONS HAVE BEEN MADE.

21. TIE A 24-INCH LOOP IN ALL WIRING AT CHANGES OF DIRECTION OF 30° OR GREATER. UNTIE AFTER ALL CONNECTIONS HAVE BEEN MADE.

22. TIE A 24-INCH LOOP IN ALL WIRING AT CHANGES OF DIRECTION OF 30° OR GREATER. UNTIE AFTER ALL CONNECTIONS HAVE BEEN MADE.

23. TIE A 24-INCH LOOP IN ALL WIRING AT CHANGES OF DIRECTION OF 30° OR GREATER. UNTIE AFTER ALL CONNECTIONS HAVE BEEN MADE.

24. TIE A 24-INCH LOOP IN ALL WIRING AT CHANGES OF DIRECTION OF 30° OR GREATER. UNTIE AFTER ALL CONNECTIONS HAVE BEEN MADE.

25. TIE A 24-INCH LOOP IN ALL WIRING AT CHANGES OF DIRECTION OF 30° OR GREATER. UNTIE AFTER ALL CONNECTIONS HAVE BEEN MADE.

26. TIE A 24-INCH LOOP IN ALL WIRING AT CHANGES OF DIRECTION OF 30° OR GREATER. UNTIE AFTER ALL CONNECTIONS HAVE BEEN MADE.

27. TIE A 24-INCH LOOP IN ALL WIRING AT CHANGES OF DIRECTION OF 30° OR GREATER. UNTIE AFTER ALL CONNECTIONS HAVE BEEN MADE.

28. TIE A 24-INCH LOOP IN ALL WIRING AT CHANGES OF DIRECTION OF 30° OR GREATER. UNTIE AFTER ALL CONNECTIONS HAVE BEEN MADE.

29. TIE A 24-INCH LOOP IN ALL WIRING AT CHANGES OF DIRECTION OF 30° OR GREATER. UNTIE AFTER ALL CONNECTIONS HAVE BEEN MADE.

30. TIE A 24-INCH LOOP IN ALL WIRING AT CHANGES OF DIRECTION OF 30° OR GREATER. UNTIE AFTER ALL CONNECTIONS HAVE BEEN MADE.

31. TIE A 24-INCH LOOP IN ALL WIRING AT CHANGES OF DIRECTION OF 30° OR GREATER. UNTIE AFTER ALL CONNECTIONS HAVE BEEN MADE.

32. TIE A 24-INCH LOOP IN ALL WIRING AT CHANGES OF DIRECTION OF 30° OR GREATER. UNTIE AFTER ALL CONNECTIONS HAVE BEEN MADE.

33. TIE A 24-INCH LOOP IN ALL WIRING AT CHANGES OF DIRECTION OF 30° OR GREATER. UNTIE AFTER ALL CONNECTIONS HAVE BEEN MADE.

34. TIE A 24-INCH LOOP IN ALL WIRING AT CHANGES OF DIRECTION OF 30° OR GREATER. UNTIE AFTER ALL CONNECTIONS HAVE BEEN MADE.

35. TIE A 24-INCH LOOP IN ALL WIRING AT CHANGES OF DIRECTION OF 30° OR GREATER. UNTIE AFTER ALL CONNECTIONS HAVE BEEN MADE.

36. TIE A 24-INCH LOOP IN ALL WIRING AT CHANGES OF DIRECTION OF 30° OR GREATER. UNTIE AFTER ALL CONNECTIONS HAVE BEEN MADE.

37. TIE A 24-INCH LOOP IN ALL WIRING AT CHANGES OF DIRECTION OF 30° OR GREATER. UNTIE AFTER ALL CONNECTIONS HAVE BEEN MADE.

38. TIE A 24-INCH LOOP IN ALL WIRING AT CHANGES OF DIRECTION OF 30° OR GREATER. UNTIE AFTER ALL CONNECTIONS HAVE BEEN MADE.

39. TIE A 24-INCH LOOP IN ALL WIRING AT CHANGES OF DIRECTION OF 30° OR GREATER. UNTIE AFTER ALL CONNECTIONS HAVE BEEN MADE.

40. TIE A 24-INCH LOOP IN ALL WIRING AT CHANGES OF DIRECTION OF 30° OR GREATER. UNTIE AFTER ALL CONNECTIONS HAVE BEEN MADE.

41. TIE A 24-INCH LOOP IN ALL WIRING AT CHANGES OF DIRECTION OF 30° OR GREATER. UNTIE AFTER ALL CONNECTIONS HAVE BEEN MADE.

42. TIE A 24-INCH LOOP IN ALL WIRING AT CHANGES OF DIRECTION OF 30° OR GREATER. UNTIE AFTER ALL CONNECTIONS HAVE BEEN MADE.

43. TIE A 24-INCH LOOP IN ALL WIRING AT CHANGES OF DIRECTION OF 30° OR GREATER. UNTIE AFTER ALL CONNECTIONS HAVE BEEN MADE.

44. TIE A 24-INCH LOOP IN ALL WIRING AT CHANGES OF DIRECTION OF 30° OR GREATER. UNTIE AFTER ALL CONNECTIONS HAVE BEEN MADE.

45. TIE A 24-INCH LOOP IN ALL WIRING AT CHANGES OF DIRECTION OF 30° OR GREATER. UNTIE AFTER ALL CONNECTIONS HAVE BEEN MADE.

46. TIE A 24-INCH LOOP IN ALL WIRING AT CHANGES OF DIRECTION OF 30° OR GREATER. UNTIE AFTER ALL CONNECTIONS HAVE BEEN MADE.

47. TIE A 24-INCH LOOP IN ALL WIRING AT CHANGES OF DIRECTION OF 30° OR GREATER. UNTIE AFTER ALL CONNECTIONS HAVE BEEN MADE.

48. TIE A 24-INCH LOOP IN ALL WIRING AT CHANGES OF DIRECTION OF 30° OR GREATER. UNTIE AFTER ALL CONNECTIONS HAVE BEEN MADE.

49. TIE A 24-INCH LOOP IN ALL WIRING AT CHANGES OF DIRECTION OF 30° OR GREATER. UNTIE AFTER ALL CONNECTIONS HAVE BEEN MADE.

50. TIE A 24-INCH LOOP IN ALL WIRING AT CHANGES OF DIRECTION OF 30° OR GREATER. UNTIE AFTER ALL CONNECTIONS HAVE BEEN MADE.

51. TIE A 24-INCH LOOP IN ALL WIRING AT CHANGES OF DIRECTION OF 30° OR GREATER. UNTIE AFTER ALL CONNECTIONS HAVE BEEN MADE.

52. TIE A 24-INCH LOOP IN ALL WIRING AT CHANGES OF DIRECTION OF 30° OR GREATER. UNTIE AFTER ALL CONNECTIONS HAVE BEEN MADE.

53. TIE A 24-INCH LOOP IN ALL WIRING AT CHANGES OF DIRECTION OF 30° OR GREATER. UNTIE AFTER ALL CONNECTIONS HAVE BEEN MADE.

54. TIE A 24-INCH LOOP IN ALL WIRING AT CHANGES OF DIRECTION OF 30° OR GREATER. UNTIE AFTER ALL CONNECTIONS HAVE BEEN MADE.

55. TIE A 24-INCH LOOP IN ALL WIRING AT CHANGES OF DIRECTION OF 30° OR GREATER. UNTIE AFTER ALL CONNECTIONS HAVE BEEN MADE.

56. TIE A 24-INCH LOOP IN ALL WIRING AT CHANGES OF DIRECTION OF 30° OR GREATER. UNTIE AFTER ALL CONNECTIONS HAVE BEEN MADE.

57. TIE A 24-INCH LOOP IN ALL WIRING AT CHANGES OF DIRECTION OF 30° OR GREATER. UNTIE AFTER ALL CONNECTIONS HAVE BEEN MADE.

58. TIE A 24-INCH LOOP IN ALL WIRING AT CHANGES OF DIRECTION OF 30° OR GREATER. UNTIE AFTER ALL CONNECTIONS HAVE BEEN MADE.

59. TIE A 24-INCH LOOP IN ALL WIRING AT CHANGES OF DIRECTION OF 30° OR GREATER. UNTIE AFTER ALL CONNECTIONS HAVE BEEN MADE.

60. TIE A 24-INCH LOOP IN ALL WIRING AT CHANGES OF DIRECTION OF 30° OR GREATER. UNTIE AFTER ALL CONNECTIONS HAVE BEEN MADE.

61. TIE A 24-INCH LOOP IN ALL WIRING AT CHANGES OF DIRECTION OF 30° OR GREATER. UNTIE AFTER ALL CONNECTIONS HAVE BEEN MADE.

62. TIE A 24-INCH LOOP IN ALL WIRING AT CHANGES OF DIRECTION OF 30° OR GREATER. UNTIE AFTER ALL CONNECTIONS HAVE BEEN MADE.

63. TIE A 24-INCH LOOP IN ALL WIRING AT CHANGES OF DIRECTION OF 30° OR GREATER. UNTIE AFTER ALL CONNECTIONS HAVE BEEN MADE.

64. TIE A 24-INCH LOOP IN ALL WIRING AT CHANGES OF DIRECTION OF 30° OR GREATER. UNTIE AFTER ALL CONNECTIONS HAVE BEEN MADE.

65. TIE A 24-INCH LOOP IN ALL WIRING AT CHANGES OF DIRECTION OF 30° OR GREATER. UNTIE AFTER ALL CONNECTIONS HAVE BEEN MADE.

66. TIE A 24-INCH LOOP IN ALL WIRING AT CHANGES OF DIRECTION OF 30° OR GREATER. UNTIE AFTER ALL CONNECTIONS HAVE BEEN MADE.

67. TIE A 24-INCH LOOP IN ALL WIRING AT CHANGES OF DIRECTION OF 30° OR GREATER. UNTIE AFTER ALL CONNECTIONS HAVE BEEN MADE.

68. TIE A 24-INCH LOOP IN ALL WIRING AT CHANGES OF DIRECTION OF 30° OR GREATER. UNTIE AFTER ALL CONNECTIONS HAVE BEEN MADE.

69. TIE A 24-INCH LOOP IN ALL WIRING AT CHANGES OF DIRECTION OF 30° OR GREATER. UNTIE AFTER ALL CONNECTIONS HAVE BEEN MADE.

70. TIE A 24-INCH LOOP IN ALL WIRING AT CHANGES OF DIRECTION OF 30° OR GREATER. UNTIE AFTER ALL CONNECTIONS HAVE BEEN MADE.

71. TIE A 24-INCH LOOP IN ALL WIRING AT CHANGES OF DIRECTION OF 30° OR GREATER. UNTIE AFTER ALL CONNECTIONS HAVE BEEN MADE.

72