

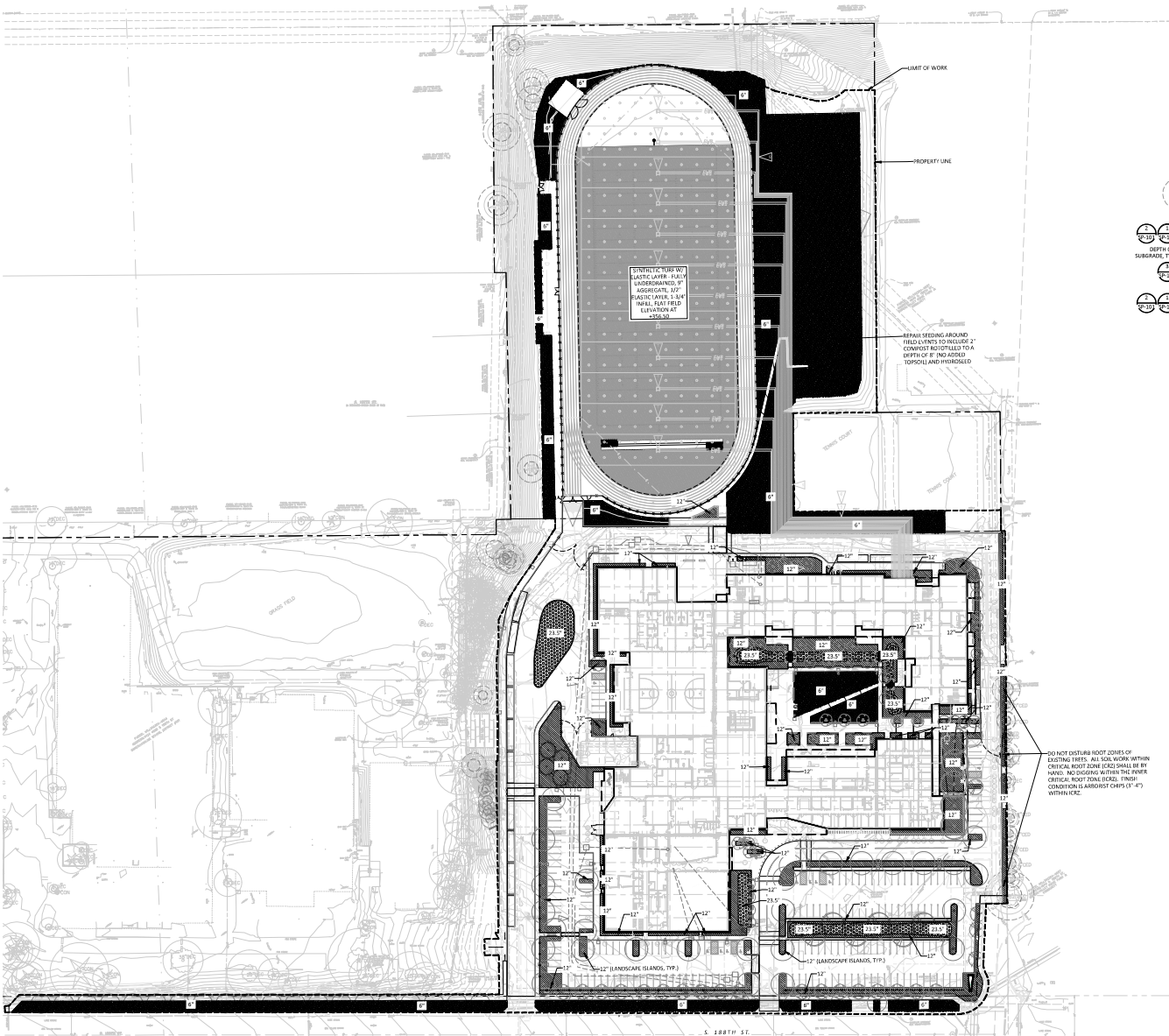
TREE PROTECTION LEGEND

- PROPERTY LINE
- TREE PROTECTION FENCE
- LIMIT OF WORK LINE
- EXISTING TREE TO BE REMOVED USE TREE INVENTORY FOR TREES TO BE MAINTAINED AND/OR TRANSPLANTED ON SITE
- EXISTING TREE OUTER CRITICAL ROOT ZONE (OFRZ)
- EXISTING TREE INNER CRITICAL ROOT ZONE (ICRZ) (1/2 DBH)
- 6" DEPTH ARBORIST CHIPS OR SITE GENERATED WOOD CHIPS FROM TREE REMOVAL, OVER CRITICAL ROOT ZONE
- SEE NOTES
- SPECIAL CONSTRUCTION REQUIREMENTS

TREE PROTECTION FENCING SHALL BE IN PLACE AND VISIBLE PRIOR TO THE START OF CONSTRUCTION ACTIVITY. INCLUDING MATERIAL DELIVERIES AND DEMOLITION, DO NOT RELOCATE FENCING AT ANY TIME WITHOUT WRITTEN APPROVAL FROM THE OWNER.

TREE PROTECTION NOTES

- SEE SURVEY FOR EXISTING CONDITIONS
- NO CONSTRUCTION ACTIVITY IS ALLOWED UNTIL TREE PROTECTION FENCING AND ARBORIST CHIP MULCH HAVE BEEN INSTALLED AND ACCEPTED.
- SEE SPECIFICATION SECTION 01 60 30. SCOPE EXCLUDES STUMP REMOVAL/GRINDING.
- REMOVAL AND REPLACEMENT OF TREES WITHIN RIGHT-OF-WAY ACCORDING TO CITY OF SEATTLE REQUIREMENTS - SEE THE STREET IMPROVEMENT PERMIT SET.
- PROVIDE PROTECTION OF EXISTING TREES TO REMAIN INCLUDING, BUT NOT LIMITED TO: ARBORIST CHIPS, PROTECTION FENCING AT OUTER CRITICAL ROOT ZONE, ARBORIST CHIP MULCH OVER ALL ROOT ZONES, AND SPECIAL PROTECTION MEASURES WITHIN ROOT ZONES THROUGHOUT PROJECT.
- PROVIDE PROTECTION OF EXISTING TREES TO REMAIN IN THE RIGHT-OF-WAY PER CITY OF SEATTLE REQUIREMENTS.
- SEE TR-10 FOR TREE PROTECTION DETAIL.
- WHERE TREE PROTECTION FENCING AND CONSTRUCTION FENCING COINCIDE, USE ONLY ONE FENCE, WHICHEVER IS MORE STABLE AND PERMANENT.
- SEE SPECIFICATION SECTION 01 60 30 FOR TREE TRUNK HARVESTING/REMOVAL REQUIREMENTS.
- CLEAR ALL UNDERSTORY VEGETATION WITHIN TREE PROTECTION AREAS PRIOR TO INSTALLATION OF TREE PROTECTION MULCH. REMOVE ALL INVASIVE SHRUBS AND VINES INCLUDING BUT NOT LIMITED TO BLACKBERRY, HOLLY, AND VY. REMOVAL SHALL BE BY HAND WITHIN TREE PROTECTION AREAS. REMOVE ALL ROOTS OF INVASIVE PLANTS.

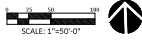


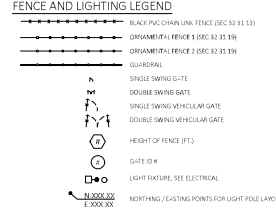
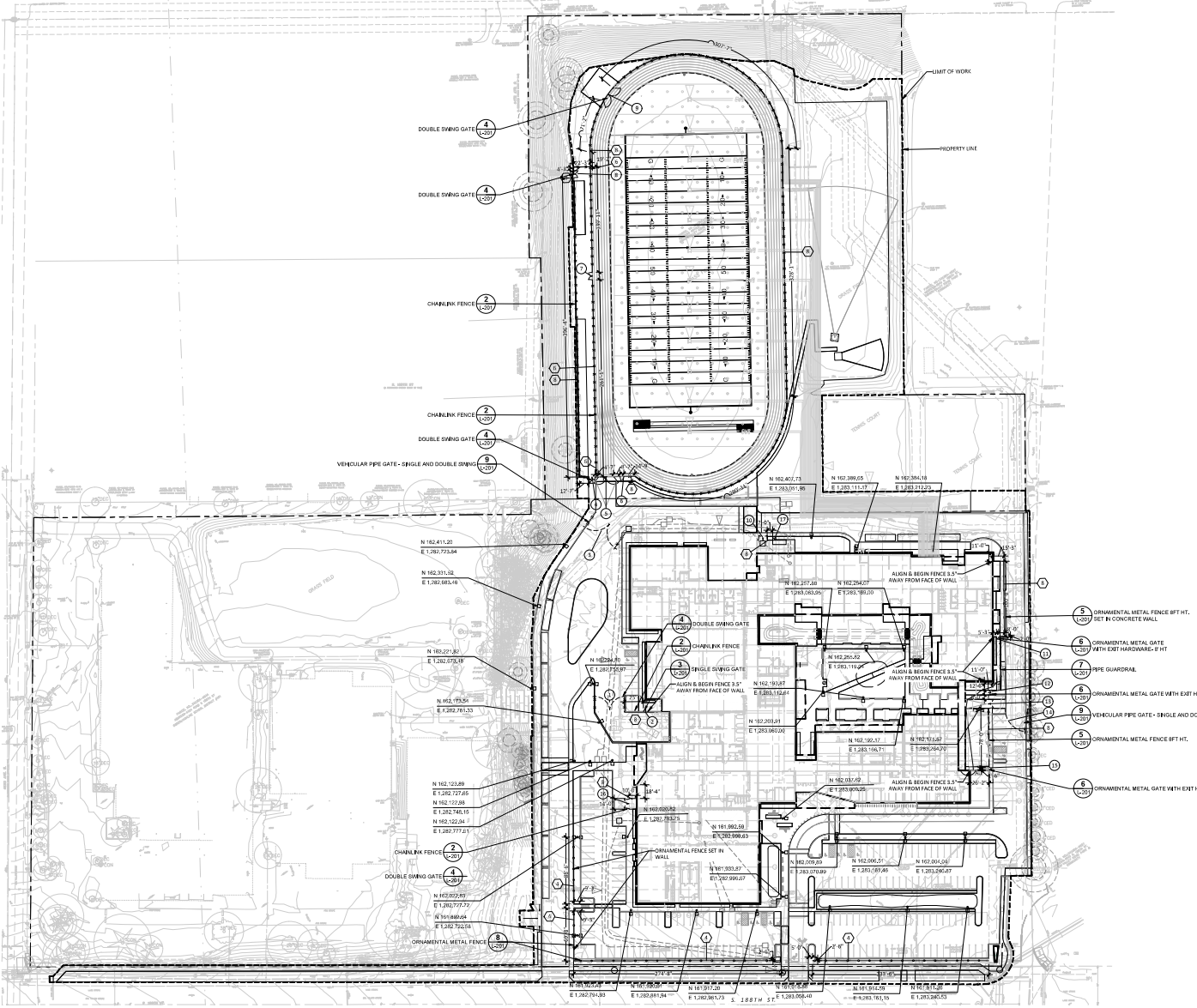
SOILS PLAN LEGEND

- PROPERTY LINE
- TREE PROTECTION FENCE
- LIMIT OF WORK LINE
- CONTOURS - EXISTING
- CONIFEROUS TREE - DETACHABLE TREE
- PROVIDE SOIL PREPARATION FOR ALL NEW TREES
- EXISTING TREE OUTER CRITICAL ROOT ZONE (OR PLANTING)
- EXISTING TREE INNER CRITICAL ROOT ZONE (1/2 OR PLANTING)
- SHRUB AND GROUNDCOVER PLANTINGS: SUBGRADE PREP: 3" COMPOST TILLED INTO SUBGRADE, PLUS 6" PLANTING SOIL, 3" TOP MULCH
- BEFORE TRENCH PLANTINGS: SUBGRADE PREP: 3" COMPOST TILLED INTO SUBGRADE, PLUS 6" PLANTING SOIL, 3" TOP MULCH
- SEEDING LAWN: SUBGRADE PREP: 3" COMPOST TILLED INTO SUBGRADE, PLUS 3.5" PLANTING SOIL
- TREE PROTECTION AND RESTORATION AREA - REMOVAL OF ALL BARKS INCLUDING HOLLY, SCOTCH BROOM, BLACKBERRY, PLANT NATIVE SHRUBS OF SALAL, FERN AND MANHATTAN, 4" DEPTH OF ARBORIST CHIPS - HOLD 6" AWAY FROM EXISTING TRUNKS OF TREES TO REMAIN

SOIL PLAN NOTES

- SEE SURVEY FOR EXISTING CONDITIONS
- REFER TO SEC 32 BY 00
- ALL PLANTING AREAS INCLUDING HYDROSEEDING LAWNS AND REPAIR AREAS SHALL RECEIVE 2" COMPOST PER SEC 32 BY 00 AND 4" DEPTH OF AT LEAST 1" SEE LEGEND FOR PLANTING SOIL DEPTH IN SPECIFIC AREAS
- ALL AREAS IMPACTED BY CONSTRUCTION ACTIVITY OF ANY KIND, INCLUDING STORAGE OF MATERIALS, SHALL RECEIVE FULL SUBGRADE PREPARATION PER SEC 32 BY 00 INCLUDING COMPOST AND HYDROSEEDING PER SEC 32 BY 00 WHICH MEETS SWANWY BMP 15.15
- CONTRACTOR RESPONSIBLE FOR ACCOMMODATING ANY FLUFF FACTOR OR SETTLING, SHOWN SHOWN ARE MINIMUMS
- SEE SOIL PREPARATION DETAILS ON SHEET SP-101





- NOTES:**
- SEE SITE SURVEY FOR EXISTING CONDITIONS.
 - ALL FENCE ANGLES TO BE 90° UNLESS OTHERWISE NOTED.
 - ALIGN FENCE PERPENDICULAR OR FLUSH TO FACE OF BUILDING WITH A 3.5' GAP BETWEEN BUILDING AND FENCE, TYP.
 - ALIGN GATES PERPENDICULAR TO AND CENTERED ON ROUTE OF VEHICULAR OR PEDESTRIAN PAVEMENT OR ROUTE OF TRAVEL, TYP. UNLESS OTHERWISE NOTED.
 - ALL GATES SHALL HAVE STANDARD LATCHES UNLESS OTHERWISE NOTED ON PLANS.
 - SEE LAYOUT PLAN FOR RAMP AND STAIR RAILS.
 - SEE LAYOUT PLAN FOR DIMENSIONS UNLESS OTHERWISE NOTED.

GATE SCHEDULE					
GATE ID NUMBER	SWING	HEIGHT	OFFERING	MATERIAL	HARDWARE
1	DOUBLE	8'-0"	48'-0"	CHAIN LINK W/ PREPACT SLATS	LATCH W/ LOCK
2	SINGLE	8'-0"	3'-0"	CHAIN LINK W/ PREPACT SLATS	LATCH W/ LOCK
3	DOUBLE	8'-0"	48'-0"	VEHICULAR PIPE GATE	LATCH W/ LOCK
4	DOUBLE	8'-0"	8'-0"	CHAIN LINK	LATCH W/ LOCK
5	DOUBLE	8'-0"	30'-0"	CHAIN LINK	LATCH W/ LOCK
6	SINGLE	8'-0"	3'-0"	CHAIN LINK	LATCH W/ LOCK
7	DOUBLE	8'-0"	30'-0"	CHAIN LINK	LATCH W/ LOCK
8	DOUBLE	8'-0"	30'-0"	CHAIN LINK	LATCH W/ LOCK
9	DOUBLE	8'-0"	20'-0"	CHAIN LINK	LATCH W/ LOCK
10	DOUBLE	8'-0"	12'-0"	CHAIN LINK	LATCH W/ LOCK
11	SINGLE	8'-0"	3'-0"	CHAIN LINK W/ PREPACT SLATS	EXT PANIC HARDWARE
12	DOUBLE	8'-0"	8'-0"	ORNAMENTAL	EXT PANIC HARDWARE
13	DOUBLE	8'-0"	12'-0"	ORNAMENTAL	LATCH W/ LOCK
14	SINGLE	8'-0"	24'-0"	VEHICULAR PIPE GATE	LATCH W/ LOCK
15	SINGLE	8'-0"	3'-0"	ORNAMENTAL	EXT PANIC HARDWARE
16	DOUBLE	8'-0"	10'-0"	CHAIN LINK	LATCH W/ LOCK
17	SINGLE	8'-0"	3'-0"	CHAIN LINK	EXT PANIC HARDWARE

