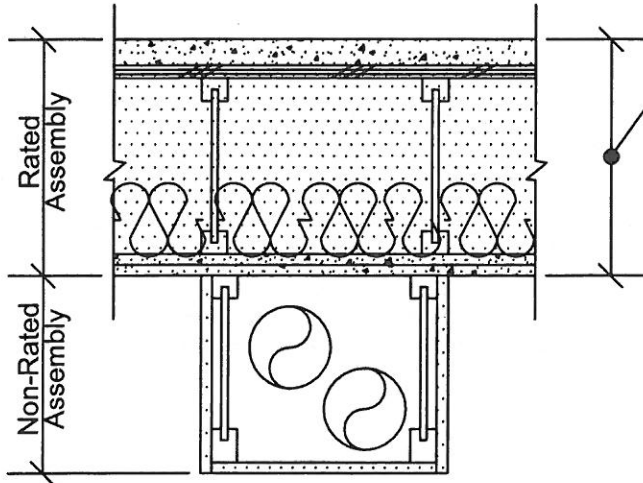




2012 Codes

### Duct Below Rated Assembly

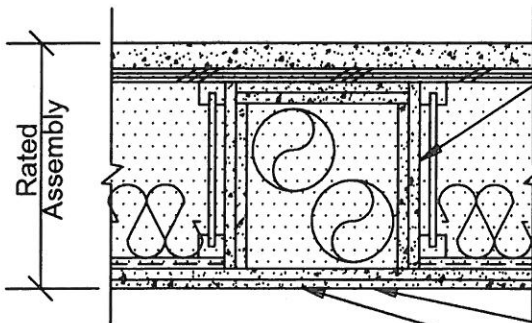


Rated assembly

**NOTE:**

No penetration of rated assembly allowed.

### Duct Through Joist Bay

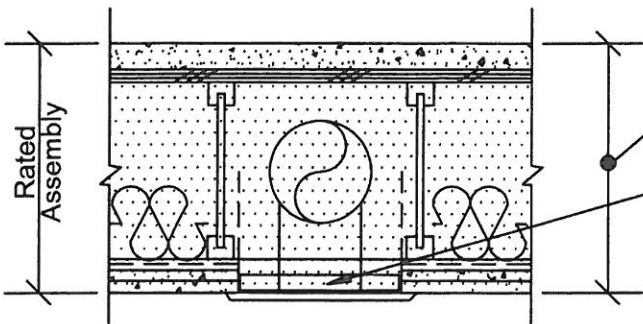


Line the joist bay with 5/8" type X gypsum wallboard on four sides of bay & ends. The number of layers of gypsum board to match the number of layers required for the rated ceiling assembly.

**NOTE:**

This detail is for venting within a single dwelling unit in sprinklered buildings only.

### Fire Dampers



Fire-resistive caulk at penetration

No fire damper is required

Rated Assembly

At ductwork penetrations of rated ceiling assembly, an approved automatic fire damper device rated for ceilings must be installed per manufacturer's listing.

#### GENERAL INFORMATION:

- The intent of this tip sheet is to address the requirements of horizontal venting only in residential structures. For specific questions not addressed here or requiring further clarification, please contact your local building department.
- Intended for heat, vent, cooling, and exhaust ducts only.

## Protected Fan in Joist Space (Sprinklered Buildings Only)

